



INDOOR TEXTILES

WITH AN ABUNDANCE OF COLOR AND
TEXTURES GALORE, WE HAVE A FABRIC TO
DRESS YOUR NEXT PROJECT.

AISLING WOOL

INDOOR



*WOOL
BLENDS AS
PLEASING
TO SIT ON
AS THEY
ARE TO SAY.*

APPLICATIONS

Hospitality, Contract, Residential Upholstery

GENERAL SPECIFICATIONS

WIDTH 54"
 ROLL SIZE 55 - 60 Yards
 WEIGHT 10 Ounces per Linear Yard
 CONTENT 70% Wool / 20% Polyester / 5% Acrylic / 5% Nylon

PERFORMANCE SPECIFICATIONS

Abrasion Resistance 75,000+ DR per ASTM D4966- 12 Martindale
 Seam Slippage 86.9 Warp / 56.0 Fill per ASTM 4034-92
 Colorfastness to Crocking 5.0 Dry / 5.0 Wet per AATCC 8-2016
 Colorfastness to Light 40 Hours - Class 5 per AATCC 16.3-2014, Option 3

FLAMMABILITY REQUIREMENTS*

California Technical Bulletin No. 117-2013
 UFAC Class 1
 NFPA 260

CLEANING INSTRUCTIONS

Cleaning Code: S/WS
 Spot clean using water-free solvent or dry cleaning product.
 Cleaning by a professional service is recommended.

DROMORE





*THIS SUBTLE
LINEN-LIKE
TEXTURE IS A
REAL WORK
OF ART.*

APPLICATIONS

Hospitality, Contract, Residential Upholstery

GENERAL SPECIFICATIONS

WIDTH	54"
ROLL SIZE	Approx. 50 Yards
WEIGHT	19 / 20 Ounces per Linear Yard
CONTENT	92% Polyester / 8% Linen
FINISH	Resilience TX

PERFORMANCE SPECIFICATIONS

Abrasion Resistance	100,000+ DR per ASTM D4157 Wyzenbeek (#10 Cotton duck)
Seam Slippage	144.2 Warp / 128.2 Fill per ASTM 4034
Colorfastness to Crocking	4.5 Dry / 5.0 Wet per AATCC 8
Colorfastness to Light	40 Hours - Class 4 per AATCC 16

FLAMMABILITY REQUIREMENTS*

California Technical Bulletin No. 117-2013
 UFAC Class 1
 NFPA 260

CLEANING INSTRUCTIONS

Cleaning Code: S
 Spot clean using water-free solvent or dry
 cleaning product.
 Cleaning by a professional service is recommended.

PROP 65 WARNING: This product may contain a chemical known to the State of California to cause cancer and birth defects or other reproductive harm.

*This term and any corresponding data refer to typical performance in the specific test indicated and should not be construed to imply the behavior of this or any other material under actual fire conditions.





*PART
MODERN.
PART
CLASSIC.
ALWAYS
TIMELESS.*



STOIC



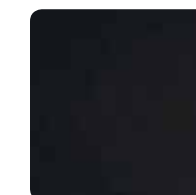
FETCHING



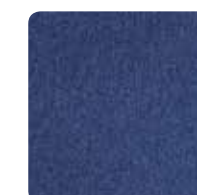
SUBLIME



ELIXIR



OPULENT



NIRVANA



PERSUASION

APPLICATIONS

Hospitality, Contract, Residential Upholstery

GENERAL SPECIFICATIONS

WIDTH	54"
ROLL SIZE	Approx. 50 - 60 Yards
WEIGHT	15 / 16 Ounces per Linear Yard
CONTENT	100% Polyester
FINISH	Resilience TX

PERFORMANCE SPECIFICATIONS

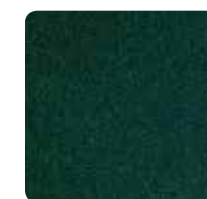
Abrasion Resistance	100,000+ DR per ASTM D4157 Wyzenbeek (#10 Cotton duck)
Seam Slippage	96.7 Warp / 120.0 Fill per ASTM 4034
Colorfastness to Crocking	4.5 Dry / 5 Wet per AATCC 8
Colorfastness to Light	40 Hours - Class 4.5 per AATCC 16

FLAMMABILITY REQUIREMENTS*

California Technical Bulletin No. 117-2013
 UFAC Class 1
 NFPA 260

CLEANING INSTRUCTIONS

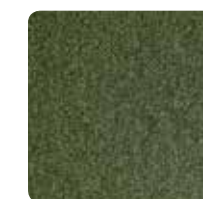
Cleaning Code: S
 Spot clean using water-free solvent or dry
 cleaning product.
 Cleaning by a professional service is recommended.



BUCOLIC



LUMEN



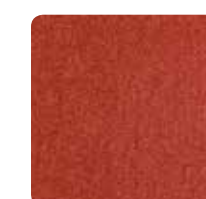
ETHEREAL



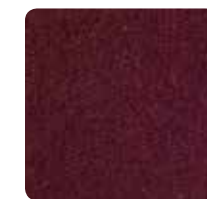
BROOD



ELYSIAN



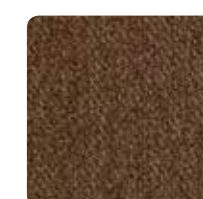
GREGARIOUS



RADIANCE



EPOCH



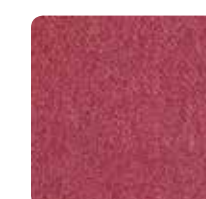
SONNET



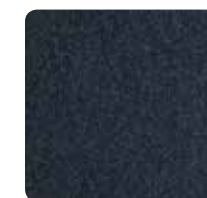
QUINTESSENTIAL



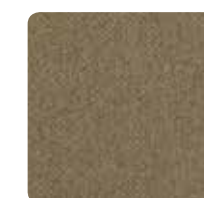
SEDUCTRESS



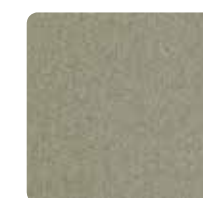
SERENDIPITY



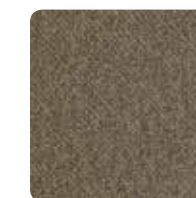
Matriarch



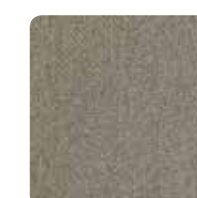
WHEREWITHAL



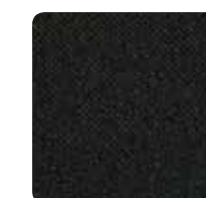
ARCADIAN



GRACIOUS



SONDER



WISTFUL

PROP 65 WARNING: This product may contain a chemical known to the State of California to cause cancer and birth defects or other reproductive harm.

*This term and any corresponding data refer to typical performance in the specific test indicated and should not be construed to imply the behavior of this or any other material under actual fire conditions.

EXPRESSIONS

INDOOR

AVAILABLE
IN EVERY
COLOR
UNDER THE
SUN.

APPLICATIONS

Hospitality, Contract, Residential Upholstery

GENERAL SPECIFICATIONS

WIDTH	54"
ROLL SIZE	55 Yards
WEIGHT	15 / 16 Ounces per Linear Yard
CONTENT	70% Wool / 20% Polyester / 5% Nylon / 5% Acrylic

PERFORMANCE SPECIFICATIONS

Abrasion Resistance	100,000+ Cycles per ASTM D4966-12 Martindale
Seam Slippage	61.1 Warp / 41.6 Fill per ASTM D4034
Colorfastness to Crocking	5 Dry / 4 Wet per AATCC 8
Colorfastness to Light	40 Hours - Class 4.0 per AATCC 16

FLAMMABILITY REQUIREMENTS*

California Technical Bulletin No. 117-2013
UFAC Class 1
NFPA 260

CLEANING INSTRUCTIONS

Cleaning Code: S
Spot clean using water-free solvent or dry cleaning product.
Cleaning by a professional service is recommended.

PROP 65 WARNING: This product may contain a chemical known to the State of California to cause cancer and birth defects or other reproductive harm.

*This term and any corresponding data refer to typical performance in the specific test indicated and should not be construed to imply the behavior of this or any other material under actual fire conditions.



BIRDS & BEES

SKY'S THE LIMIT

STEEL MY THUNDER



APPLE A DAY



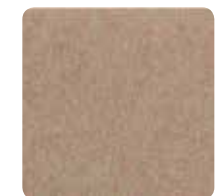
BATTLE ROYAL



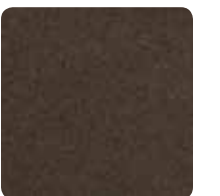
CROCODILE TEARS



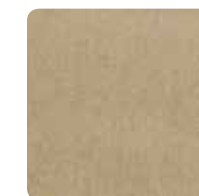
POTATO, POTATO



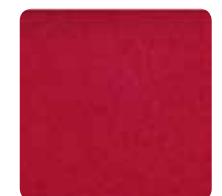
SCOUT'S HONOR



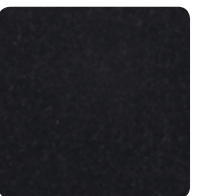
CLOSE BUT NO CIGAR



BACK TO BASICS



EASY AS PIE



IT'S WITCHCRAFT



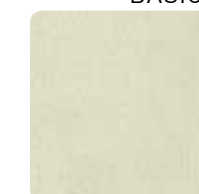
ABRACADABRA



DEVIL'S ADVOCATE



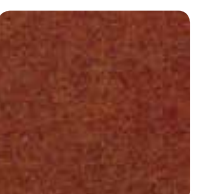
PACK LEADER



WHITE BREAD



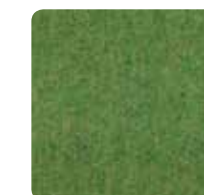
GREASED LIGHTENING



ALL BARK



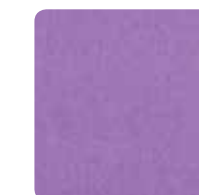
HANKY PANKY



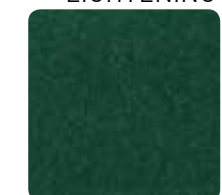
PINE AWAY



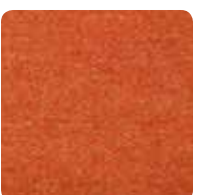
BROWNIE POINTS



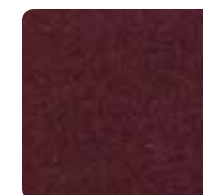
OH NO SHE DIDN'T



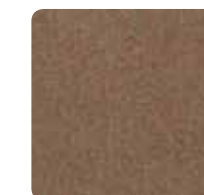
FILTHY RICH



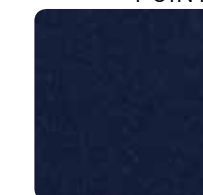
INDIAN SUMMER



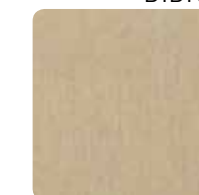
DINNER AND A SHOW



BAKER'S DOZEN



WILD BLUE YONDER



CATCH 22



*THIS VELVET IS
ALL DRESSED
UP WITH
EVERYWHERE
TO GO.*

APPLICATIONS

Hospitality, Contract, Residential Upholstery

GENERAL SPECIFICATIONS

WIDTH	54"
ROLL SIZE	Approx. 30 - 35 Yards
WEIGHT	20 / 21 Ounces per Linear Yard
CONTENT	60% Acrylic / 40% Polyester
FINISH	Resilience TX

PERFORMANCE SPECIFICATIONS

Abrasion Resistance	100,000+ DR per ASTM D4157 Wyzenbeek (#10 Cotton duck)
Seam Slippage	
Colorfastness to Crocking	93.4 Warp / 92.3 Fill per ASTM 4034
Colorfastness to Light	4.5 Dry / 4.5 Wet per AATCC 8 40 Hours - Class 5 per AATCC 16

FLAMMABILITY REQUIREMENTS*
California Technical Bulletin No. 117-2013
UFAC Class 1
NFPA 260

CLEANING INSTRUCTIONS
Cleaning Code: S
Spot clean using water-free solvent or dry
cleaning product.
Cleaning by a professional service is recommended.

PROP 65 WARNING: This product may contain a chemical known to the State of California to cause cancer and birth defects or other reproductive harm.

*This term and any corresponding data refer to typical performance in the specific test indicated and should not be construed to imply the behavior of this or any other material under actual fire conditions.



*COMFORT &
STYLE IN ALL
THE RIGHT
PLACES*



APPLICATIONS

Hospitality, Contract, Healthcare, Special & Industrial

GENERAL SPECIFICATIONS

WIDTH	54"
ROLL SIZE	30 Yards
WEIGHT	30 Ounces per Linear Yard
BACKING	100% Polyester Knit
SURFACE	100% PVC
FINISH	Resilience SR Protection

PERFORMANCE SPECIFICATIONS

Abrasion Resistance	250,000+ DR per ASTM D4157 Wyzenbeek / CFFA-6
Other Performance	Anti-Bacterial / Anti-Microbial
Cold Crack	-20° F Federal Standard No. 191A-Method 5874 / CFFA-6

FLAMMABILITY REQUIREMENTS*

California Technical Bulletin No. 117-2013
 UFAC Class 1
 NFPA 260
 IMO A.652
 Boston Fire Dept. BFD-IX-1
 Port Authority of NY/NJ
 MVSS302

CLEANING INSTRUCTIONS

Prompt cleaning is always recommended.
 Ordinary dirt and stains can be removed with mild soap and water. Rinse the cleaned area with clean water and dry with a lint free cloth.





*ORDINARY TO
EXTRAORDINARY*

APPLICATIONS

Hospitality, Contract, Special & Industrial Upholstery

GENERAL SPECIFICATIONS

WIDTH	54"
ROLL SIZE	40 Yards
WEIGHT	28 Ounces per Linear Yard
BACKING	100% Polyester Knit

PERFORMANCE SPECIFICATIONS

Abrasion Resistance	50,000+ DR per ASTM D4157-92 Wyzenbeek / CFFA-1A
Ultra Violet Resistant	200 Hours ASTM G26-96 Method C / CFFA-2
Cold Crack	-10° F Federal Standard No. 191A-Method 5874 / CFFA-6

FLAMMABILITY REQUIREMENTS*

California Technical Bulletin No. 117-2013
BIFMA X5.7-1991 Section 4
UFAC Class 1
NFPA 260

CLEANING INSTRUCTIONS

Prompt cleaning is always recommended.
Ordinary dirt and stains can be removed with mild soap and water. Rinse the cleaned area with clean water and dry with a lint free cloth.



PROP 65 WARNING: This product may contain a chemical known to the State of California to cause cancer and birth defects or other reproductive harm.

*This term and any corresponding data refer to typical performance in the specific test indicated and should not be construed to imply the behavior of this or any other material under actual fire conditions.