



Table of Contents

Outdoor Furniture

| | |
|-----------------------|----------|
| Alpha bases | 49,116 |
| Aruba lounge seating | 52 |
| Avalon | 23 |
| Bali bases | 48 |
| Barnegat tables | 26 |
| Bayview | 28 |
| Bayview tables | 29 |
| Beachcomber | 8 |
| Beachcomber tables | 9,43 |
| Belmar lounge seating | 54 |
| Boca bases | 50 |
| Cancun booth | 39 |
| Chesapeake | 25 |
| Daytona | 18 |
| Daytona table | 19,43 |
| Elite bases | 49,116 |
| Fresco | 14 |
| Fresco tables | 15,44 |
| Hampton | 16 |
| Hampton bases | 48 |
| Hampton tables | 17,44 |
| Key West | 7 |
| Kingston | 24 |
| Largo | 36 |
| Longport 4-leg tables | 37,45 |
| Longport table tops | 37,46 |
| Margate bases | 48 |
| Marina | 39 |
| Maze | 20 |
| Maze lounge series | 21 |
| Monterey | 38 |
| Nexus tables | 20,43 |
| Norden | 40 |
| Seaside | 30 |
| Seaside 4-leg tables | 31,45 |
| Seaside picnic table | 32 |
| Seaside table tops | 31,46 |
| South Beach | 10 |
| South Beach tables | 11,43 |
| Surf Inlay tables | 34,44,57 |
| Tribeca table tops | 35,46 |
| Venice beach | 22 |
| Vista | 12 |
| Vista tables | 13,45 |

Umbrellas

| | |
|-----------------------|-----|
| Aluminum market | 64 |
| Bolt-down | 68 |
| Cantilever | 70 |
| Crank lift fiberglass | 60 |
| Fiberglass market | 58 |
| G-series aluminum | 66 |
| G-series fiberglass | 62 |
| Umbrella bases | 72 |
| Umbrella base guide | 131 |

Mixed Material Seating

| | |
|--------------------|-------|
| Dalton | 79 |
| Hamilton | 81 |
| Henry | 84 |
| Lima clear coat | 85 |
| Lincoln | 83 |
| Memphis | 82 |
| Nash | 78 |
| NV | 80 |
| The Screw barstool | 86 |
| Trent clear coat | 85,98 |

Steel Seating

| | |
|------------------|----|
| Akrin | 96 |
| Axel | 90 |
| Dale | 91 |
| Darby | 93 |
| Espy | 92 |
| Lima | 89 |
| Lima Silver Mist | 88 |
| Marietta | 94 |
| Polk | 95 |
| Trent | 98 |
| Troy | 97 |

Wood Seating

| | |
|----------|-----|
| Aston | 105 |
| Berkeley | 106 |
| Columbia | 109 |
| Cornell | 108 |
| Dover | 104 |
| Emma | 101 |
| Giulia | 103 |
| Sofia | 102 |
| Stockton | 107 |

Indoor Tables & Bases

| | |
|--|---------|
| Alpha base | 116 |
| Adele base | 115 |
| Bolt-down bases | 117 |
| Cantilever & pin leg bases | 117 |
| Corner post legs | 117 |
| Elite bases | 116 |
| I-Beam bases | 117 |
| Indoor, standard, cross, end & round bases | 115 |
| Jaxon bases | 114 |
| Luna bases | 114 |
| Midtown table tops | 111 |
| Niles bases | 115 |
| NV legs | 117 |
| Relic table tops | 112 |
| Stamped chrome bases | 116 |
| Uptown bases | 114,115 |
| Wood veneer table tops | 111 |

Trash Receptacles

| | |
|----------------------------|-----|
| 35 Gallon trash enclosures | 118 |
|----------------------------|-----|

Server Stations

| | |
|----------------------------|-----|
| Single door server station | 120 |
| Double door server station | 122 |

Wireless Table Charging

| | |
|-----------------------------------|-----|
| Key, Battery, Charging Tray, Kits | 113 |
|-----------------------------------|-----|

Design

| | |
|----------------------------------|-----|
| Grade 1 vinyl | 124 |
| Grade 2 vinyl | 125 |
| Grade 3 vinyl | 126 |
| Grade 4 vinyl | 127 |
| Steel seating wood seat options | 124 |
| Steel seating Relic seat options | 124 |
| Sunbrella® sofa cushion fabric | 128 |
| Umbrella fabric | 130 |

Reference

| | |
|---------------------------------|-----|
| Indoor Table Base Sizing Guide | 132 |
| Outdoor Table Base Sizing Guide | 133 |
| Terms & Conditions | 134 |
| Umbrella base guide | 131 |



Key West series



NP



PRODUCT INFORMATION

| | |
|---------------|--|
| PHKWAC+finish | armchair dimensions h31 w21.25 sh17.75 sd16.5 |
| PHKWSC+finish | side chair dimensions h31.25 w19.5 sh17.5 sd16.5 |
| PHKWBS+finish | barstool dimensions h39.75 w20.5 sh29.25 sd15.25 |
| frame finish | WH ○ white SG ● soft gray |
| materials | aluminum powder coat |
| feature | stackable |

Beachcomber series



PRODUCT INFORMATION

PH812C+finish side chair dimensions | h33 | w21.75 | sh18 | sd17 | sw17.5

PH812B+finish barstool dimensions | h45 | w21.75 | sh29 | sd14 | sw18

frame finish WH ● white | LM ● lime | BY ● berry | CT ● citrus

materials aluminum | powder coat

feature stackable side chairs

Beachcomber tables



MARGATE



BALI

PRODUCT INFORMATION

PHB+size+finsh+Bali combination set dimensions | 24 x 32 | 32 x 32 | 36 x 36 | dining height

PHB+size+finish+Bali+T combination set dimensions | 24 x 32 | 32 x 32 | 36 x 36 | bar height

PHB+size+finish+Margate combination set dimensions | 24 x 32 | 32 x 32 | 36 x 36 | dining height

PHB+size+finish+Margate+T combination set dimensions | 24 x 32 | 32 x 32 | 36 x 36 | bar height

PHB3248 +finish+Bali 32 x 48 end base dining height | bar height +T

frame finish WH white | LM lime | BY berry | CT citrus

materials aluminum | powder coat

feature margate base supports umbrella (24 x 32 no umbrella hole)

South Beach series



PRODUCT INFORMATION

| | |
|--------------|--|
| DV350TS | armchair dimensions h33.5 w23.5 sh18 sd16 sw18 armht27 |
| DV450TS | side chair dimensions h33.5 w21 sh18 sd16 sw18 |
| DV550TS | barstool dimensions h39.5 w19.75 sh30 sd13 sw16 |
| frame finish | TS ● titanium silver |
| materials | aluminum powder coat |
| feature | stackable |

South Beach tables



PRODUCT INFORMATION

| | |
|--------------|--|
| DVS+size+TS | table dimensions 24 x 32 <small>(no umbrella hole)</small> 32 x 32 36 x 36 32 x 48 dining height |
| DVS3232TSUT | table dimensions 32 x 32 bar height |
| frame finish | TS ● titanium silver |
| materials | aluminum powder coat |
| feature | base supports umbrella 32 x 48 weighted umbrella base required, sold separately, see page 72 |

Vista series



PRODUCT INFORMATION

| | |
|--------------|--|
| DV352+finish | armchair dimensions h33 w21.5 sh18 sd16.5 sw19.5 armht26.5 |
| DV452+finish | side chair dimensions h33 w19.75 sh18 sd16.5 sw15 |
| DV552+finish | barstool dimensions h40 w22.25 sh30.5 sd13.5 sw13.5 |
| frame finish | BL ● black ER ● earth |
| materials | aluminum powder coat |
| feature | stackable |

Vista tables



PRODUCT INFORMATION

| | |
|-----------------|--|
| DVV+size+finish | table dimensions 32 x 32 36 x 36 32 x 48 (ADA compliant) |
| frame finish | BL ● black ER ● earth |
| materials | aluminum powder coat |
| features | bolt-down part #DVV-BD for vista tables umbrella hole standard weighted umbrella base required, sold separately, see page 72 |

Fresco series



PRODUCT INFORMATION

| | |
|--------------|--|
| PH802CBZ | side chair dimensions h33.5 w19.25 sh18 sd17.25 sw16 |
| PH802BBZ | barstool dimensions h45 w19.5 sh29.5 sd17 sw16 |
| frame finish | BZ ● bronze |
| materials | aluminum powder coat |
| feature | side chair stackable |

Fresco tables



PRODUCT INFORMATION

| | |
|--------------|---|
| PH4L3232BZU | 4-leg table dimensions 32 x 32 dining height |
| PH4L3636BZU | 4-leg table dimensions 36 x 36 dining height |
| PH4L3255BZU | 4-leg table dimensions 32 x 55 dining height |
| PH4L3232BZUT | 4-leg table dimensions 32 x 32 bar height |
| PH4L3636BZUT | 4-leg table dimensions 36 x 36 bar height |
| PH4L3255BZUT | 4-leg table dimensions 32 x 55 bar height |
| materials | aluminum powder coat |
| feature | ADA compliant sizes available umbrella hole weighted umbrella base required, sold separately, see page 72 |

Hampton series



PRODUCT INFORMATION

| | |
|--------------|---|
| PH901CBZ | armchair dimensions h32 w21.5 sh18 sd18 sw16 armht26.25 |
| PH902CBZ | side chair dimensions h32 w18 sh18 sd18 sw15 |
| PH902BBZ | barstool dimensions h44 w19 sh30 sd17.5 sw15 |
| frame finish | BZ ● bronze |
| materials | aluminum powder coat |
| feature | stackable |

Hampton tables



PRODUCT INFORMATION

| | |
|--------------|--|
| PHH+size+BZ | table dimensions 24 x 32 32 x 32 36 x 36 dining height |
| PHH+size+BZT | table dimensions 24 x 32 32 x 32 36 x 36 bar height |
| PHHTB-BZ | cross base dining height base only |
| PHHTB-BZT | cross base bar height base only |
| frame finish | BZ ● bronze |
| materials | aluminum powder coat |
| feature | adjustable levelers table sold as a set |

Daytona series



PRODUCT INFORMATION

| | |
|--------------|--|
| SU2811CSG | armchair dimensions h33 w21.5 sh18 sd16 sw16 armht25.5 |
| SU2810CSG | side chair dimensions h33 w17.75 sh18 sd16 sw16 |
| SU2810BSG | barstool dimensions h42 w18.5 sh30 sd14.25 sw16 |
| frame finish | SG ● soft gray |
| materials | e-coated steel powder coated |
| feature | stackable |

Daytona tables



PRODUCT INFORMATION

| | |
|--------------|---|
| SUD+size+SGU | table dimensions 32 x 32 32 x 48 36 x 36 dining height |
| SUD3232SGUT | table dimensions 32 x 32 bar height |
| frame finish | SG ● soft gray |
| materials | e-coated steel powder coated |
| feature | ADA compliant sizes available umbrella holes weighted umbrella base required sold separately, see page 72 |

Maze series



NEXUS

PRODUCT INFORMATION

| | |
|-------------------|---|
| DV360+finish | armchair dimensions h29.5 w22 sh18 sd17 sw16 armht28 |
| DV560+finish | barstool dimensions h41 w20.5 sh29 sd14.5 sw16 |
| DVN+size+finish | table dimensions 24 x 32 (no umbrella hole) 32 x 32 36 x 36 dining height (table not available in black) |
| DVN+size+finish+T | table dimensions 32 x 32 bar height (table not available in black) |
| frame finish | TS ● titanium silver GE ● grenadine BL ● black (table not available in black) |
| materials | e-coated steel powder coated steel micro mesh |
| features | stackable umbrella capability 32x32 and 36x36 weighted umbrella base required, sold separately, see page 72 table not available in black finish |

Maze lounge series



PRODUCT INFORMATION

| | |
|---------------|---|
| DV260+finish | lounge chair dimensions h27 w28.25 sh14 sd19 sw22.5 |
| DV160+finish | footstool dimensions h14.5 w17.5 d22.5 |
| DVL18R+finish | side table dimensions 18" |
| DVL30R+finish | lounge table dimensions 30" |
| frame finish | TS ● titanium silver GE ● grenadine |
| materials | e-coated steel powder coated steel micro mesh |

Venice Beach series



PRODUCT INFORMATION

| | |
|--------------|---|
| DV355+finish | armchair dimensions h30.75 w20.5 sh18 sd15.5 sw16 armht28 |
| DV455+finish | side chair dimensions h33.25 w16.5 sh18 sd15.5 sw16 |
| DV555+finish | barstool dimensions h40.5 w21.5 sh31 sd16 sw16 |
| frame finish | TS ● titanium silver GE ● grenadine |
| materials | e-coated steel powder coated steel micro mesh |
| feature | stackable |

Avalon series



PRODUCT INFORMATION

DV354BL armchair dimensions | h34 | w22.75 | sh18 | sd17 | sw17.5 | armht26.25

DV454BL side chair dimensions | h34 | w19.5 | sh18 | sd17 | sw17.5

DV554BL barstool dimensions | h40.5 | 20.25 | sh29 | sd14 | sw16.25

frame finish BL ● black

materials e-coated steel | powder coated | steel micro mesh

feature stackable

Kingston series



PRODUCT INFORMATION

| | |
|--------------|---|
| SU1601CBL | armchair dimensions h32.25 w21.25 sh17.5 sd14.5 sw17.5 armht25.75 |
| SU1600CBL | side chair dimensions h32.25 w20.25 sh17.5 sd14.5 sw17.75 |
| SU1600BBL | barstool dimensions h39.75 w19 sh29.75 sd13.5 sw15.5 |
| frame finish | BL ● black |
| materials | e-coated steel powder coated steel micro mesh |
| feature | stackable |

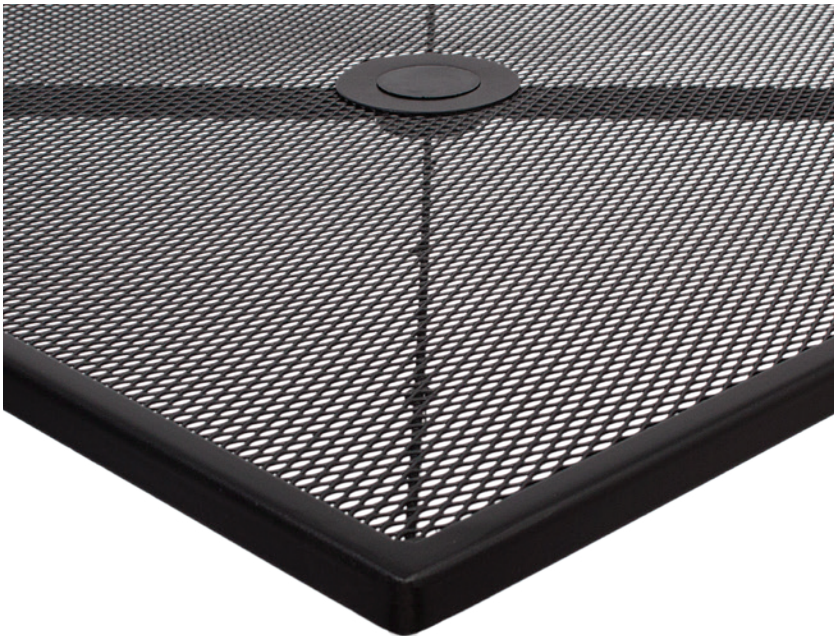
Chesapeake series



PRODUCT INFORMATION

| | |
|--------------|--|
| SU1301CBL | armchair dimensions h34 w21 sh17.5 sd17.5 sw17 armht25.5 |
| SU1300CBL | side chair dimensions h34 w17.75 sh17.5 sd17.5 sw17 |
| SU1300BBL | barstool dimensions h43.5 w17.25 sh30 sd15.5 sw16 |
| frame finish | BL ● black |
| materials | e-coated steel powder coated steel micro mesh |
| features | stackable |

Barnegat tables



PRODUCT INFORMATION

| | |
|--------------|--|
| SU+size+BL-D | table dimensions 24 x 32 30 x 30 36 x 36 24R 30R 36R 42R dining height |
| SU+size+BL-T | table dimensions 24 x 32 30 x 30 36 x 36 24R 30R 36R 42R bar height |
| frame finish | BL ● black |
| materials | e-coated steel powder coated steel micro mesh |
| feature | umbrella compatible (weighted umbrella base required, sold separately, see pg. 72 no umbrella hole 24R) |



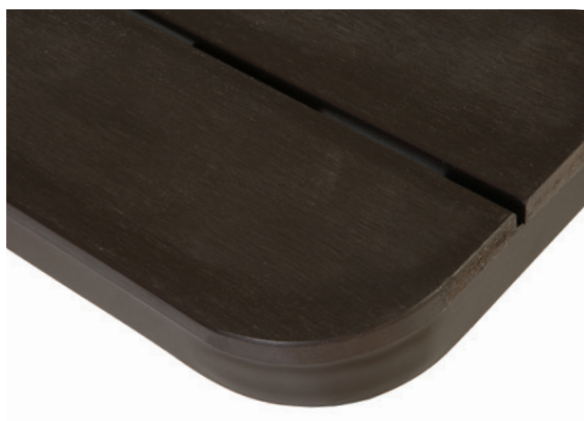
Bayview series



PRODUCT INFORMATION

| | |
|--------------|--|
| PH301CBR-BZ | armchair dimensions h32.5 w22 sh18 sd17 sw16 armht25 |
| PH302CBR-BZ | side chair dimensions h32.5 w18 sh18 sd17 sw16 |
| PH302BBR-BZ | barstool dimensions h45 w17.25 sh29 sd17 sw16 |
| frame finish | BZ ● bronze |
| materials | aluminum powder coat walnut synthetic wood |
| feature | arm and side chair stackable |

Bayview tables



PRODUCT INFORMATION

| | |
|----------------|--|
| PH4L3232BR-BZ | 4-leg table dimensions 32 x 32 dining height |
| PH4L3636BR-BZ | 4-leg table dimensions 36 x 36 dining height |
| PH4L3255BR-BZ | 4-leg table dimensions 32 x 55 dining height |
| PH4L3232BR-BZT | 4-leg table dimensions 32 x 32 bar height |
| PH4L3636BR-BZT | 4-leg table dimensions 36 x 36 bar height |
| PH4L3255BR-BZT | 4-leg table dimensions 32 x 55 bar height |
| materials | aluminum powder coat walnut synthetic wood |
| feature | ADA compliant sizes available umbrella hole optional weighted umbrella base required, sold separately, see page 72 |

Attention: refracting sunlight from stemware or a concentrated heat source may cause damage to synthetic surface, voiding warranty.

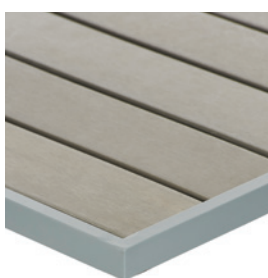
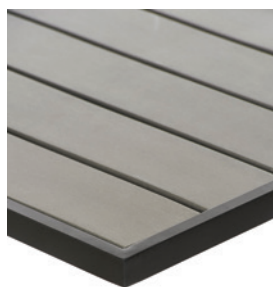
Seaside series



PRODUCT INFORMATION

| | |
|--------------------|--|
| PH201CGRTK+finish | armchair dimensions h33 w22 sh17.5 sd17.5 sw19.5 armht24 |
| PH202CGRTK+ finish | side chair dimensions h33 w19 sh17.5 sd17.5 sw16 |
| PH201BGRTK+finish | arm barstool dimensions h45 w22 sh29.5 sd17.5 sw19.5 armht36 |
| PH202BGRTK+finish | side barstool dimensions h45 w18.75 sh29.5 sd17.5 sw15.5 |
| frame finish | SG ● soft gray BL ● black |
| materials | aluminum powder coat gray synthetic teak |
| feature | armchair and side chair stackable |

Seaside tables



PRODUCT INFORMATION

| | |
|-----------------------|---|
| PH+size+GR+finish | table top dimensions 24 x 30 30 x 30 34 x 34 30 x 51 |
| base options | alpha bali margate |
| PH4L+size+GR+finish | 4-leg table dimensions 31 x 31 35 x 35 31 x 48 35 x 72 dining height |
| PH4L+size+GR+finish+T | 4-leg table dimensions 31 x 48 35 x 72 bar height |
| frame finish | SG ● soft gray BL ● black |
| materials | aluminum powder coat gray synthetic teak |
| features | ADA compliant sizes available umbrella hole not available on 24 x 30 tops or 4-leg bar height tables margate base supports umbrella weighted umbrella base required 4-leg and 30 x 51 tables, see page 72 |

Seaside series

NP



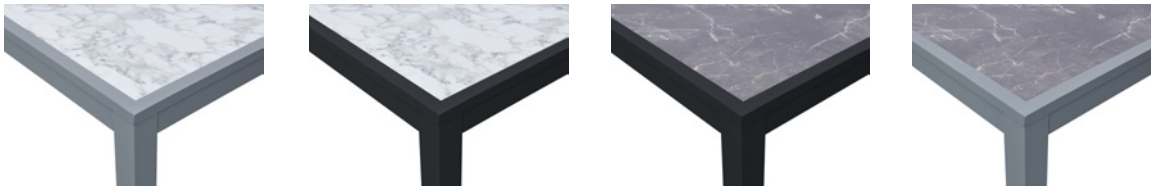
PRODUCT INFORMATION

| | |
|--------------|--|
| PH5927GR | dimensions top 27.5 d x 59 w x 29.5 h seat 12.5 d x 59 w x 18 h overall 60.25 d |
| PH7227GR | dimensions top 27.5 d x 72 w x 29.5 h seat 12.5 d x 72 w x 18 h overall 60.25 d |
| frame finish | SG ● soft gray BL ● black |
| materials | aluminum powder coat gray synthetic teak |
| features | umbrella hole optional weighted umbrella base required, sold separately, see page 72 |

Attention: refracting sunlight from stemware or a concentrated heat source may cause damage to synthetic surface, voiding warranty" (see page 31 for reference)



Surf Inlay tables

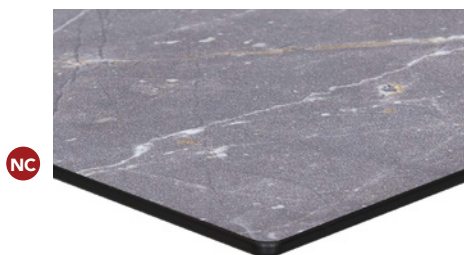
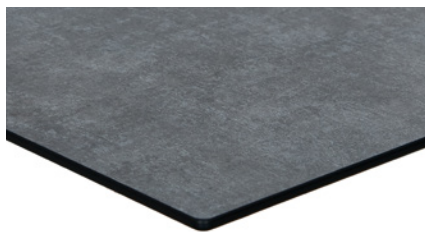


NP

PRODUCT INFORMATION

| | |
|-------------------------|--|
| PH4L+ size + finish | 4-leg table dimensions 32x32 36x36 32x48 36x72 dining height |
| PH4L+ size + finish + T | 4-leg table dimensions 32x48 36x72 bar height |
| inlay | CR ● carrara ● PR pietro |
| frame finish | SG ● soft gray BL ● black |
| materials | aluminum powder coat compact laminate |
| features | umbrella hole optional weighted umbrella base required, sold separately, see page 72 ADA compliant sizes available umbrella hole not available on bar height tables |

Tribeca table tops



PRODUCT INFORMATION

| | | |
|----------------|--|---------------------|
| TRN2432+finish | 24 x 32 | TRN32R+finish 32R |
| TRN3232+finish | 32 x 32 | TRN36R+finish 36R |
| TRN3248+finish | 32 x 48 | TRN48R+finish 48R |
| TRN3636+finish | 36 x 36 | |
| base options | bali margate alpha elite hampton | |
| finish | FS ● frosted slate PP ● planked pine DW ● driftwood CR ● carrara ● PR pietra | |
| materials | compact laminate | |
| feature | umbrella hole optional (margate bases only) 32x48 requires a weighted umbrella base, sold separately, see page 72 | |

Largo series



PRODUCT INFORMATION

| | |
|-----------------|--|
| PH101CTK+finish | armchair dimensions h33 w22 sh17.25 sd18 sw19 armht24 |
| PH102CTK+finish | side chair dimensions h33 w18.5 sh17.5 sd17 sw16.5 |
| PH101BTK+finish | arm barstool dimensions h45.75 w22 sh29.25 sd18 sw19 armht36 |
| PH102BTK+finish | side barstool dimensions h45.5 w18.5 sh29.75 sd17.5 sw16.5 |
| frame finish | BL ● black SV ● silver |
| materials | aluminum powder coat synthetic teak |
| feature | armchair and side chair stackable |

Longport tables



PRODUCT INFORMATION

| | |
|-----------------------|--|
| PH+size+TK+finish | table top dimensions 24 x 24 24 x 30 32 x 32 35 x 35 32 x 48 24R 32R 34R |
| base options | alpha bali margate |
| PH4L+size+TK+finish | 4-leg table dimensions 32 x 32 35 x 35 32 x 48 35 x 71 dining height |
| PH4L+size+TK+finish+T | 4-leg table dimensions 32 x 48 35 x 71 bar height |
| frame finish | BL ● black SV ● silver |
| materials | aluminum powder coat synthetic teak table top |
| features | ADA compliant sizes available umbrella hole not available on 24x24, 24x30 tops or 4-leg bar height tables margate base supports umbrella weighted umbrella base required 4-leg and 32x48 tables, see page 72 |

Attention: refracting sunlight from stemware or a concentrated heat source may cause damage to synthetic surface, voiding warranty.

Monterey series



PRODUCT INFORMATION

| | |
|--------------|--|
| PH501CJV | armchair dimensions h34.5 w21.75 sh18 sd17 sw 18 armht24 |
| PH500CJV | side chair dimensions h34 w19 sh18 sd17 sw 16 |
| PH500BJV | barstool dimensions h42.25 w18.75 sh29.75 sd16 sw 18.5 |
| wicker color | JV ● java |
| materials | aluminum outdoor synthetic weave |
| features | stackable side and armchair aluminum leg endcaps |

Cancun booth



Marina series



PRODUCT INFORMATION

| | |
|--------------|--|
| PH7100JV | Cancun booth bench dimensions h37.5 w48 sh17.5 sd18 |
| wicker color | JV ● java |
| materials | aluminum frame powder coat outdoor synthetic weave |
| features | 2" cushion available aluminum foot caps |
| PH11CBBBL | Marina armchair dimensions h30 w21 sh17.75 sd18 sw19.5 armht27 |
| PH10BBBBL | Marina backless barstool dimensions h30.75 w17.25 sd13.25 sw13.25 |
| frame finish | black powder coat brown/black weave & binding |
| materials | aluminum frame powder coat outdoor synthetic weave 2" cushion available, sold separately |
| feature | armchair stackable |

Norden series



PRODUCT INFORMATION

| | |
|--------------|---|
| PH3084STKBL | side chair dimensions h31 w17 sh18 sd17 |
| PH6074STKBL | backless barstool dimensions h30.5 w14 sd12 |
| frame finish | BL ● black |
| materials | aluminum powder coat synthetic teak |
| feature | side chair stackable |





Outdoor tables

South Beach tables



DVS2432TS | dining height table | 24 x 32 (umbrella hole N/A)

DVS3232TSU | dining height table | 32 x 32

DVS3636TSU | dining height table | 36 x 36

DVS3248TSU | dining height table | 32 x 48

DVS3232TSUT | bar height table | 32 x 32

finish | TS ● titanium silver powder coat

materials | powder coated aluminum

features | base supports umbrella | base included | 32x48 table requires weighted umbrella base, sold separately, see page 72

Daytona tables



SUD3232SGU | 4-leg dining height table | 32 x 32

SUD3248SGU | 4-leg dining height table | 32 x 48

SUD3636SGU | 4-leg dining height table | 36 x 36

SUD3232SGUT | 4-leg bar height table | 32 x 32

finish | TS ● titanium silver powder coat

materials | aluminum | powder coat

feature | corner leg design | umbrella capability | weighted umbrella base required, sold separately, see page 72
ADA compliant sizes available

Nexus tables



DVN2432 | dining height table | 24 x 32 (umbrella not available)

DVN3232 | dining height table | 32 x 32

DVN3636 | dining height table | 36 x 36

DVN3232T | bar height table | 32 x 32

finish | TS ● titanium silver | GE ● grenadine

materials | e-coated steel | powder coated | micro mesh

feature | umbrella capability | weighted umbrella base required, sold separately, see page 72

Beachcomber tables



PHB2432 | dining height table | 24 x 32

PHB3232 | dining height table | 32 x 32

PHB3248 | dining height table | 32 x 48

PHB3636 | dining height table | 36 x 36

PHB2432T | bar height table | 24 x 32

PHB3232T | bar height table | 32 x 32

PHB3636T | bar height table | 36 x 36

PHB3048T | bar height table | 30 x 48

finish | WH ○ white | LM ● lime | BY ● berry | CT ● citrus

materials | powder coated aluminum

base option | margate or bali | margate supports umbrella

30x48 tables require weighted umbrella base, sold separately
see page 72

Hampton tables



- PHH2432BZ | dining height table | 24 x 32
- PHH3232BZ | dining height table | 32 x 32
- PHH3636BZ | dining height table | 36 x 36
- PHH2432BZT | bar height table | 24 x 32
- PHH3232BZT | bar height table | 32 x 32
- PHH3636BZT | bar height table | 36 x 36
- finish | BZ ● bronze
- materials | powder coated aluminum
- feature | base included

Fresco tables



- PH4L3232BZU | 4-leg dining height table | 32 x 32
- PH4L3636BZU | 4-leg dining height table | 36 x 36
- PH4L3255BZU | 4-leg dining height table | 32 x 55
- PH4L3232BZUT | 4-leg bar height table | 32 x 32
- PH4L3636BZUT | 4-leg bar height table | 36 x 36
- PH4L3255BZUT | 4-leg bar height table | 32 x 55
- finish | solid aluminum surface | BZ ● bronze powder coat
- materials | aluminum | powder coat
- feature | corner leg design | 32x55 ADA compliant
umbrella hole included | weighted umbrella base
required, sold separately, see page 72

Surf Inlay tables



NP

- PH4L3232TK | 4-leg bolt-down table | 32 x 32
- PH4L3248TK | 4-leg bolt-down table | 32 x 48 (ADA compliant)
- PH4L3636TK | 4-leg bolt-down table | 36 x 36
- PH4L3672TK | 4-leg bolt-down table | 36 x 72 (ADA compliant)
- PH4L3248TKT | 4-leg bolt-down table bar height | 32 x 48
- PH4L3671TKT | 4-leg bolt-down table bar height | 36 x 71
- inlay | CR ☹ carrara | ● PR pietra
- frame finish | SG ● soft gray | BL ● black
- materials | aluminum | powder coat | compact laminate
- umbrella hole optional | weighted umbrella base required,
sold separately, see page 72 | ADA compliant sizes available
umbrella hole not available on bar height tables | bolt-down
feature

Seaside tables



PH4L3131GR | 4-leg bolt-down table | 31 x 31

PH4L3148GR | 4-leg bolt-down table | 31 x 48 (ADA compliant)

PH4L3535GR | 4-leg bolt-down table | 35 x 35

PH4L3572GR | 4-leg bolt-down table | 35 x 72 (ADA compliant)

PH4L3148GRT | 4-leg bar height bolt-down table | 31 x 48

PH4L3572GRT | 4-leg bar height bolt-down table | 35 x 72

finish | synthetic teak | frame options BL ● black | SG ● soft gray

materials | synthetic wood | aluminum | powder coat

feature | corner leg design | umbrella hole optional (dining height only)
| weighted umbrella base required, sold separately,
see page 72 | ADA compliant sizes available
bolt-down feature

Longport tables



PH4L3232TK | 4-leg bolt-down table | 32 x 32

PH4L3248TK | 4-leg bolt-down table | 32 x 48 (ADA compliant)

PH4L3535TK | 4-leg bolt-down table | 35 x 35

PH4L3571TK | 4-leg bolt-down table | 35 x 71 (ADA compliant)

PH4L3248TKT | 4-leg bolt-down table bar height | 32 x 48

PH4L3571TKT | 4-leg bolt-down table bar height | 35 x 71

finish | synthetic teak | frame options BL ● black | SV ● silver

materials | synthetic wood | aluminum | powder coat

feature | corner leg design | umbrella hole optional (dining height only)
| weighted umbrella base required, sold
separately, see page 72 | ADA compliant sizes available
bolt-down feature

Vista tables



DVW3232 | 32 x 32

DVW3636 | 36 x 36

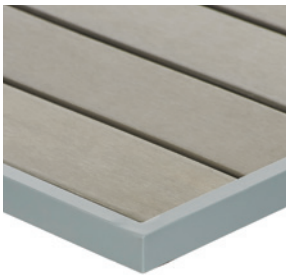
DVW3248 | 32 x 48 (ADA compliant)

finish | BL ● black | ER ● earth

materials | powder coated aluminum

feature | corner leg design | umbrella hole | | weighted
umbrella base required, sold separately,
see page 72

Seaside table tops



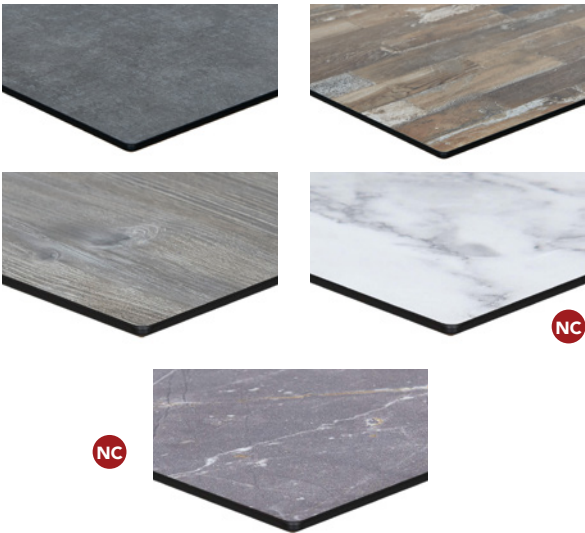
- PH2430GRTK | 24 x 30
- PH3030GRTK | 30 x 30
- PH3434GRTK | 34 x 34
- PH3051GRTK | 30 x 51
- finish | SG ● soft gray edge | ● BL black edge
- materials | gray synthetic teak | aluminum sub-frame powder coat
- base option | margate or bali or alpha | margate supports umbrella | 30 x 51requires weighted umbrella base, sold separately, see page 72
- feature | umbrella hole upon request (margate only)

Longport table tops



- PH2424TK | 24 x 24
- PH3248TK | 32 x 48
- PH2432TK | 24 x 32
- PH24RTK | 24R
- PH3232TK | 32 x 32
- PH32RTK | 32R
- PH3636TK | 35 x 35
- PH36RTK | 34R
- finish | SV ● silver edge | BL ● black edge
- materials | synthetic teak | aluminum sub-frame | powder coat
- base option | margate or bali or alpha | margate supports umbrella | 32x48 requires a weighted umbrella base, sold separately, see page 72
- feature | umbrella hole upon request (margate only) except 24x24 & 24R

Tribeca table tops



- TRN2432+finish | 24 x 32
- TRN32R+finish | 32R
- TRN3232+finish | 32 x 32
- TRN36R+finish | 36R
- TRN3248+finish | 32 x 48
- TRN48R+finish | 48R
- TRN3636+finish | 36 x 36
- finish | FS ● frosted slate | PP● planked pine | DW ● driftwood
CR ● carrara | PR ● pietro
- materials | compact laminate
- feature | umbrella hole optional (margate bases only)
32x48 requires a weighted umbrella base, sold separately, see page 72



Outdoor bases



Margate

PHBT+size+SQ | square dining height

PHBT+size+SQT | square bar height

base dimension | 16 x 16 | 18 x 18 | 20 x 20
24 x 24

finish | BL ● black | SV ● silver
Additional 18sq & 20sq base finishes
WH ○ white | LM ● lime
BY ● berry | CT ● citrus

materials | powder coated | zinc plated cast iron
stainless steel column

features | center post base with umbrella
capabilities, pinch nut



Margate

PHTB+size+R | round dining height

PHTB+size+RT | round bar height

base dimension | 16 | 18 | 20 | 24

finish | BL ● black | SV ● silver

materials | powder coated | zinc plated cast
iron, stainless steel column

features | center post base with umbrella
capabilities, pinch nut



Bali

PHTB2626 | cross base dining height

PHTB2626T | cross base bar height

base dimension | 26 x 26

finish | BL ● black | SV ● silver
WH white | LM ● lime
BY ● berry | CT ● citrus

materials | powder coated cast
aluminum

feature | additional cast weight



Bali end

PHTB0022 | dining height (sold as pair)

PHTB0022T | bar height (sold as pair)

base dimension | 22 x 3.25

finish | BL ● black | SV ● silver
WH white | LM ● lime
BY ● berry | CT ● citrus

materials | powder coated | weighted cast
aluminum

feature | compatible with Margate series



Bali folding

PHTB2626F | folding dining height

base dimension | 26 x 26

finish | BL ● black | SV ● silver

materials | powder coated, weighted
cast aluminum

feature | folding

capabilities | safely holds up to 32" top



Hampton

PHHTB-BZ | cross base dining height

PHHTB-BZT | cross base bar height

base dimension | 26 x 26

finish | BZ ● bronze

materials | powder coated aluminum

feature | additional cast weight

Outdoor bases



Elite square

PHTB+size+SQSS | dining height

PHTB+size+SQSST | bar height

base dimension | 18 x 18 | 24 x 24

materials | 304 brushed stainless steel



Elite round

PHTB+size+RSS | dining height

PHTB+size+RSST | bar height

base dimension | 18 | 24

materials | 304 brushed stainless steel



Elite end

PHTB0024SS | dining height (sold as pair)

PHTB0024SST | end bases bar height
(sold as pair)

base dimension | 4 x 24

materials | 304 brushed stainless steel

feature | ADA capabilities



Elite double column

PHTB1630SS | dining height

PHTB1630SST | bar height

base dimension | 16 x 30

materials | 304 brushed stainless steel



Alpha

PHTB-BDSS | bolt-down base
dining height

PHTB-BDSST | bolt-down base
bar height

base dimension | 8

finish | SS ● stainless steel

materials | 304 brushed stainless steel
powder coated

capabilities | bolt down



Alpha

PHTB-BD

PHTB-BDT | bolt-down base bar height

base dimension | 8

finish | BL ● black | SV ● silver

materials | 304 stainless steel

capabilities | bolt down

print or web page colors and overall dimensions are for reference only

Outdoor bases



Boca

PHTB501 | 4-leg dining height

base spread | 24"

finish | BL ● black

materials | powder coated cast aluminum



Boca bar height

PHTB503 | 4-leg bar height

base spread | 24"

finish | BL ● black

materials | powder coated cast aluminum



Boca umbrella

PHTB502 | umbrella base standard height

base spread | 33"

finish | BL ● black

materials | powder coated cast aluminum

feature | umbrella compatible
(weighted umbrella base required, sold separately, see page 72)



Boca trestle

PHTB504 | trestle base standard height

base spread | 24" x 36.5"

supports | 32 x 48

finish | BL ● black

materials | powder coated cast aluminum



Modular seating

Aruba series



PH5101JV-L/R | left or right arm sofa

dimensions | h26 | w29 | d29

finish | java

materials | aluminum | synthetic wicker

features | 4" seat cushion with wedge design back | cushion D-hooks | sectional connection hooks | L sectional capability

cushion | sold separately | 58 colors available
upholstery found on pages 128 – 129



PH5101JV-MW | large middle sofa

dimensions | h26 | w25.25 | d29

finish | java

materials | aluminum | synthetic wicker

features | 4" seat cushion with wedge design back | cushion D-hooks | sectional connection hooks | L sectional capability

cushion | sold separately | 58 colors available
upholstery found on pages 128 – 129



PH5101JV-C | corner sofa

dimensions | h26 | w29 | d29

finish | java

materials | aluminum | synthetic wicker

features | 4" seat cushion with wedge design back | cushion D-hooks | sectional connection hooks | L sectional capability

cushion | sold separately | 58 colors available
upholstery found on pages 128 – 129



PH5102JV | armchair

dimensions | h26 | w29 | d29

finish | java

materials | aluminum | synthetic wicker

features | 4" seat cushion with wedge design back | cushion D-hooks

cushion | sold separately | 58 colors available
upholstery found on pages 128 – 129



PH5106JV | ottoman

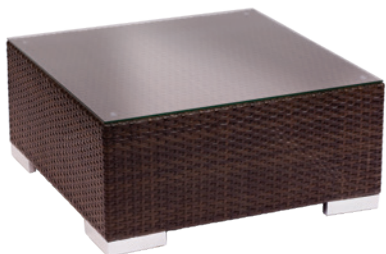
dimensions | h14 | w25 | d25

finish | java

materials | aluminum | synthetic wicker

features | 4" seat cushion

cushion | sold separately | 58 colors available
upholstery found on pages 128 – 129



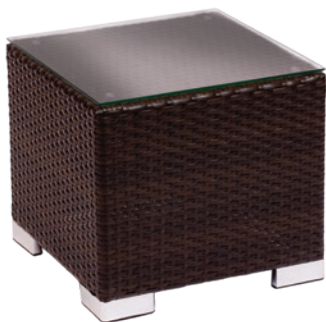
PH5104JV | coffee table

dimensions | h14 | w30 | d30

finish | java

materials | aluminum | synthetic wicker

feature | tempered glass sold separately



PH5105JV | end table

dimensions | h16 | w18 | d18

java

materials | aluminum, synthetic wicker

feature | tempered glass sold separately

Belmar series



PH6101-L | left arm sofa

dimensions | h25.75 | w28.25 | d28.25

finish | SG ● soft gray | BL ● black

materials | aluminum powder coat

features | 6" seat cushion with wedge design back | cushion D-hooks | sectional connection hooks | L sectional capability

cushion | sold separately | 58 colors available
upholstery found on pages 128 – 129



PH6101-R | right arm sofa

dimensions | h25.75 | w28.25 | d28.25

finish | SG ● soft gray | BL ● black

materials | aluminum powder coat

features | 6" seat cushion with wedge design back | cushion D-hooks | sectional connection hooks | L sectional capability

cushion | sold separately | 58 colors available
upholstery found on pages 128 – 129



PH6101-M | armless middle sofa

dimensions | h25.75 | w25.5 | d28.25

finish | SG ● soft gray | BL ● black

materials | aluminum powder coat

features | 6" seat cushion with wedge design back | cushion D-hooks | sectional connection hooks | L sectional capability

cushion | sold separately | 58 colors available
upholstery found on pages 128 – 129



PH6102 | armchair

dimensions | h25.75 | w28.25 | d28.25

finish | SG ● soft gray | BL ● black

materials | aluminum powder coat

features | 6" seat cushion with wedge design back | cushion D-hooks

cushion | sold separately | 58 colors available
upholstery found on pages 128 – 129



PH6106 | ottoman

dimensions | h12 | w27.5 | d25.5

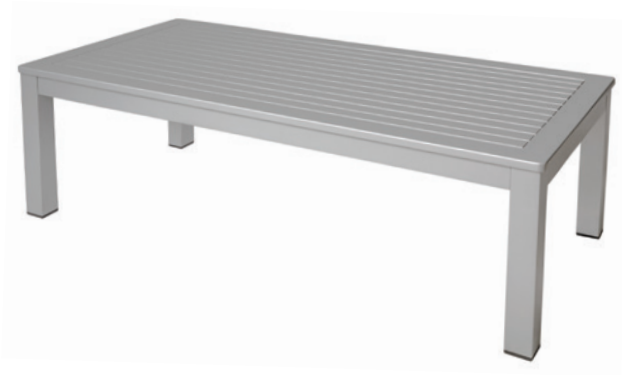
finish | SG ● soft gray | BL ● black

materials | aluminum powder coat

features | 6" seat cushion

cushion | sold separately | 58 colors available
upholstery found on pages 128 – 129

Belmar series



PH6104 | coffee table

dimensions | h16 | w47 | d23.5

finish | SG ● soft gray | BL ● black

materials | aluminum powder coat

feature | large 2" legs with slat design surface



PH6105 | end table

dimensions | h16 | w21.5 | d21.5

finish | SG ● soft gray | BL ● black

materials | aluminum powder coat

feature | large 2" legs with slat design surface

Inlay series



SURF INLAY

PH4L + size + table color + frame finish | dining table

dimensions | 36x36 | 32x48 | 32x48 bar height
36x72 | 36x72 bar height

finish | SG ● soft gray | BL ● black

table top | CR ● carrara | ● PR pietra

materials | aluminum powder coat | compact laminate

umbrella hole optional | weighted umbrella base required,
sold separately, see page 72 | ADA compliant sizes available
umbrella hole not available on bar height tables

BELMAR INLAY

PH6104 + inlay color + finish color | coffee table

dimensions | h16 | w47 | d23.5

finish | SG ● soft gray | BL ● black

inlay | CR ● carrara | ● PR pietra

materials | aluminum powder coat | compact laminate

feature | large 2" legs



BELMAR INLAY

PH6105 + inlay color + finish color | end table

dimensions | h16 | w21.5 | d21.5

finish | SG ● soft gray | BL ● black

inlay | CR ● carrara | ● PR pietra

materials | aluminum powder coat | compact laminate

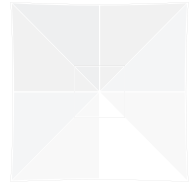
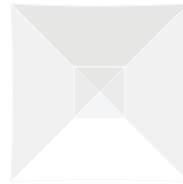
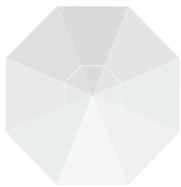
feature | large 2" legs



Fiberglass Market umbrellas



PULLEY LIFT



AVAILABLE FRAME SIZES

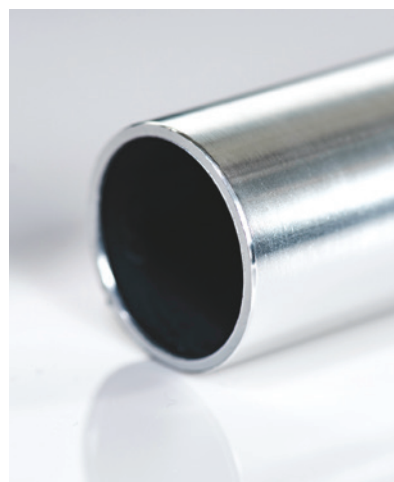
| U7.5F: 7.5' OCTAGON | U9F: 9' OCTAGON | U11F: 11' OCTAGON | U6.5F: 6.5' SQUARE | U7.5SQF: 7.5' SQUARE |
|----------------------------------|--|---------------------|---------------------|----------------------|
| A: height: 94" | A: height: 97" | A: height: 107" | A: height: 97" | A: height: 107" |
| B: clearance: 76" | B: clearance: 77" | B: clearance: 82" | B: clearance: 77" | B: clearance: 82" |
| C: upper pole 66" | C: upper pole 69" | C: upper pole 77" | C: upper pole 69" | C: upper pole 77" |
| D: lower pole: 37" | D: lower pole: 37" | D: lower pole: 37" | D: lower pole: 37" | D: lower pole: 37" |
| mast diameter: 1.5" | mast diameter: 1.5" | mast diameter: 1.5" | mast diameter: 1.5" | mast diameter: 1.5" |
| weight: 16 lbs. | weight: 20 lbs. | weight: 22 lbs. | weight: 15 lbs. | weight: 18 lbs. |
| frame finish | SV silver SM silver mist WG wood grain BL black BZ bronze WH white | | | |
| fabric color options on page 130 | | | | |



COMMERCIAL PULLEY SYSTEM



HIGH IMPACT POLYMER JOINTS AND
.5" FIBERGLASS RIBS



1.5" DIAMETER CENTER POLE

HIGH IMPACT TPU COPOLYMER FINIALS



Standard: CLASSIC BALL FINIAL
Finial will match selected frame finish



Optional: VERTEX FINIAL
Finial will match selected frame finish

FINISHES AVAILABLE



FEATURES

Smooth and effortless pulley system.

1/2" fiberglass ribs and struts for maximum strength and flexibility.

1.5" diameter center pole with a 1/8" aluminum wall thickness provides incredible strength and durability.

Stainless steel grommets attach the canopy securely to the frame.

Modular design.

Stainless steel hardware throughout.

BASE OPTIONS

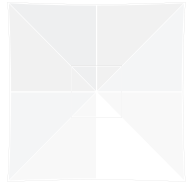
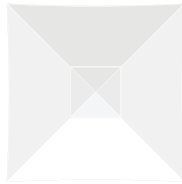
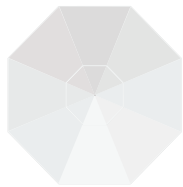
UB100RSM aluminum shell (page 72) | UB70RD resin coated concrete (page 72) | UB50RD resin coated concrete (page 72)

UB75SQ steel plate (page 72) | UBBD camlock (page 76) | UBG24RSM galvanized steel (page 73) | UBG30RSM galvanized steel (page 73)

Crank Lift Fiberglass umbrellas



COMMERCIAL CRANK LIFT - NO TILT



AVAILABLE FRAME SIZES

| U7.FC: 7.5' OCTAGON | U9FC: 9' OCTAGON | U11FC: 11' OCTAGON | U6.5FC: 6.5' SQUARE | U7.5SQFC: 7.5' SQUARE |
|---------------------|---------------------|---------------------|---------------------|-----------------------|
| A: height: 98" | A: height: 107" | A: height: 108" | A: height: 107" | A: height: 108" |
| B: clearance: 72" | B: clearance: 79" | B: clearance: 87" | B: clearance: 79" | B: clearance: 87" |
| C: upper pole 66" | C: upper pole 69" | C: upper pole 77" | C: upper pole 69" | C: upper pole 77" |
| D: lower pole: 37" | D: lower pole: 37" | D: lower pole: 37" | D: lower pole: 37" | D: lower pole: 37" |
| mast diameter: 1.5" | mast diameter: 1.5" | mast diameter: 1.5" | mast diameter: 1.5" | mast diameter: 1.5" |
| weight: 17 lbs. | weight: 22 lbs. | weight: 24 lbs. | weight: 18 lbs. | weight: 21 lbs. |

frame finish SV silver | SM silver mist | WG wood grain | BL black | BZ bronze | WH white

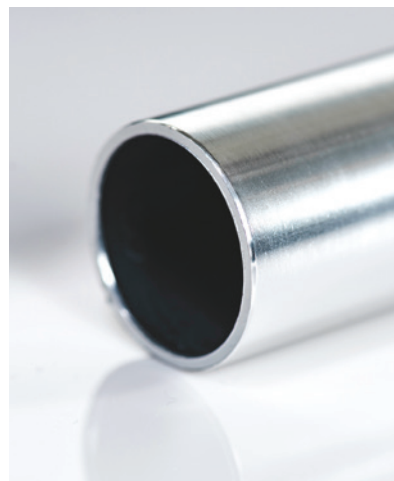
fabric color options on page 130



COMMERCIAL
CRANK SYSTEM



HIGH IMPACT POLYMER JOINTS AND
.5" FIBERGLASS RIBS



1.5" DIAMETER CENTER POLE

HIGH IMPACT TPU COPOLYMER FINIALS



Standard: CLASSIC BALL FINIAL
Finial will match selected frame finish.



Optional: VERTEX FINIAL
Finial will match selected frame finish.

FINISHES AVAILABLE



FEATURES

316 cast solid stainless steel crank handle and axle.

1/2" fiberglass ribs and struts for maximum strength and flexibility.

1.5" diameter center pole with a 1/8" aluminum wall thickness provides incredible strength and durability.

Stainless steel grommets attach the canopy securely to the frame.

Modular design.

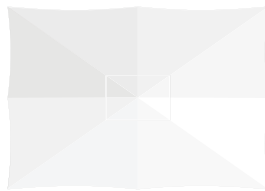
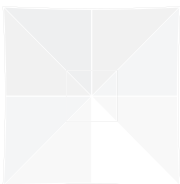
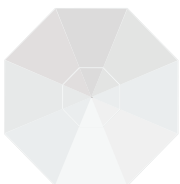
Stainless steel hardware throughout.

BASE OPTIONS

UB100RSM aluminum shell (page 72) | UB70RD resin coated concrete (page 72) | UB50RD resin coated concrete (page 72)

UB75SQ steel plate (page 72) | UBBD camlock (page 76) | UBG24RSM galvanized steel (page 73) | UBG30RSM galvanized steel (page 73)

G-Series Fiberglass Market umbrellas



AVAILABLE FRAME SIZES

U13F: 13' OCTAGON

U10F 10' SQUARE

U8511F: 8.5' x11' RECTANGLE

| | | |
|-----------------------|-----------------------|-----------------------|
| A: height: 115" | A: height: 115" | A: height: 115" |
| B: clearance: 85" | B: clearance: 87" | B: clearance: 86" |
| closed clearance: 30" | closed clearance: 25" | closed clearance: 28" |
| mast diameter: 2" | mast diameter: 2" | mast diameter: 2" |
| weight: 38 lbs. | weight 36 lbs. | weight 33 lbs. |

standard frame finish

● SV silver

fabric color options on page 130



POLISHED SILVER ANODIZED
ALUMINUM FINISH



HIGH IMPACT POLYMER JOINTS AND
.75" FIBERGLASS RIBS



COMMERCIAL
DOUBLE PULLEY SYSTEM

MARINE GRADE CHROME PLATED ALUMINUM FINIALS



Standard: CLASSIC BALL FINIAL



Optional: VERTEX FINIAL

FEATURES

Smooth and effortless double pulley system.

.75" diameter fiberglass ribs and struts support this giant canopy, and provides strength and rigidity.

2" diameter single piece aluminum center pole is 3 mm thick, provides incredible strength and durability.

Modular design.

Stainless steel hardware throughout.

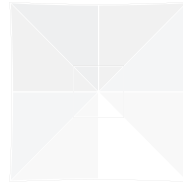
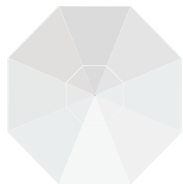
Multiple mounting options are available, either semi-permanent or base mounted.

BASE OPTIONS


UBG36RSM galvanized steel (page 73) | UBG40RSM galvanized steel (page 74) | UB480 heavy duty wheel (page 74)

UB150RSM aluminum shell (page 73)

Aluminum Market umbrellas



AVAILABLE FRAME SIZES

| U7.5ASV: 7.5' OCTAGON | U9ASV: 9' OCTAGON | U11ASV: 11' OCTAGON | U6.5ASV: 6.5' SQUARE | U7.5SQASV: 7.5' SQUARE |
|----------------------------------|---|---------------------|----------------------|------------------------|
| A: height: 94" | A: height: 102" | A: height: 108" | A: height: 102" | A: height: 108" |
| B: clearance: 70" | B: clearance: 76" | B: clearance: 82" | B: clearance: 76" | B: clearance: 82" |
| C: upper pole 63" | C: upper pole 69" | C: upper pole 77" | C: upper pole 69" | C: upper pole 77" |
| D: lower pole: 37" | D: lower pole: 37" | D: lower pole: 37" | D: lower pole: 37" | D: lower pole: 37" |
| mast diameter: 1.5" | mast diameter: 1.5" | mast diameter: 1.5" | mast diameter: 1.5" | mast diameter: 1.5" |
| weight: 17 lbs. | weight: 22 lbs. | weight: 24 lbs. | weight: 15 lbs. | weight: 21 lbs. |
| standard frame finish | SV  silver | | | |
| fabric color options on page 130 | | | | |



POLISHED SILVER ANODIZED
ALUMINUM FINISH



HIGH IMPACT POLYMER JOINTS AND
EXTRUDED ALUMINUM RIBS



COMMERCIAL PULLEY SYSTEM

MARINE GRADE CHROME PLATED ALUMINUM FINIALS



Standard: VERTEX FINIAL



Optional: CLASSIC BALL FINIAL

FEATURES

Smooth and effortless pulley system.

Ergonomically designed ribs maintain the shape and provide added strength.

1.5" diameter, 1/8" wall thickness aluminum center pole provides incredible strength and durability.

Stainless steel hardware throughout.

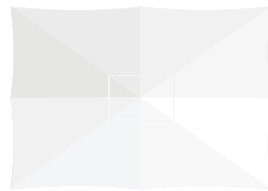
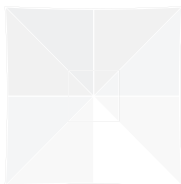
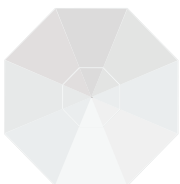
Multiple mounting options are available, either semi-permanent or base mounted.

BASE OPTIONS

UB100RSM aluminum shell (page 72) | UB70RD resin coated concrete (page 72) | UB50RD resin coated concrete (page 72)

UB75SQ steel plate (page 72) | UBBD camlock (page 76) | UBG24RSM galvanized steel (page 73) | UBG30RSM galvanized steel (page 73)

G-Series Aluminum Market umbrellas




AVAILABLE FRAME SIZES

U13ASV: 13' OCTAGON

U10ASV: 10' SQUARE

U8511ASV: 8.5' x11' RECTANGLE

| | | |
|----------------------------------|---|-----------------------|
| A: height: 115" | A: height: 115" | A: height: 115" |
| B: clearance: 85" | B: clearance: 87" | B: clearance: 86" |
| closed clearance: 20" | closed clearance: 23" | closed clearance: 23" |
| mast diameter: 2" | mast diameter: 2" | mast diameter: 2" |
| weight: 38 lbs. | weight 36 lbs. | weight 33 lbs. |
| standard frame finish | SV  silver | |
| fabric color options on page 130 | | |



POLISHED SILVER ANODIZED
ALUMINUM FINISH



HIGH IMPACT POLYMER JOINTS AND
EXTRUDED ALUMINUM RIBS

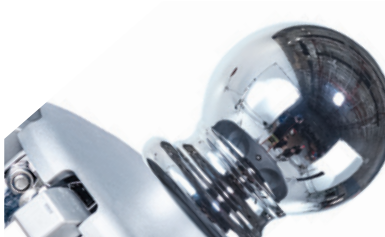


COMMERCIAL
DOUBLE PULLEY SYSTEM

MARINE GRADE CHROME PLATED ALUMINUM FINIALS



Standard: VERTEX FINIAL



Optional: CLASSIC BALL FINIAL

FEATURES

Smooth and effortless double pulley system.

Ergonomically designed ribs maintain the shape and provide added strength.

2" diameter single piece aluminum center pole is 3 mm thick, provides incredible strength and durability.

Stainless steel hardware throughout.

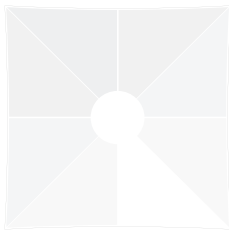
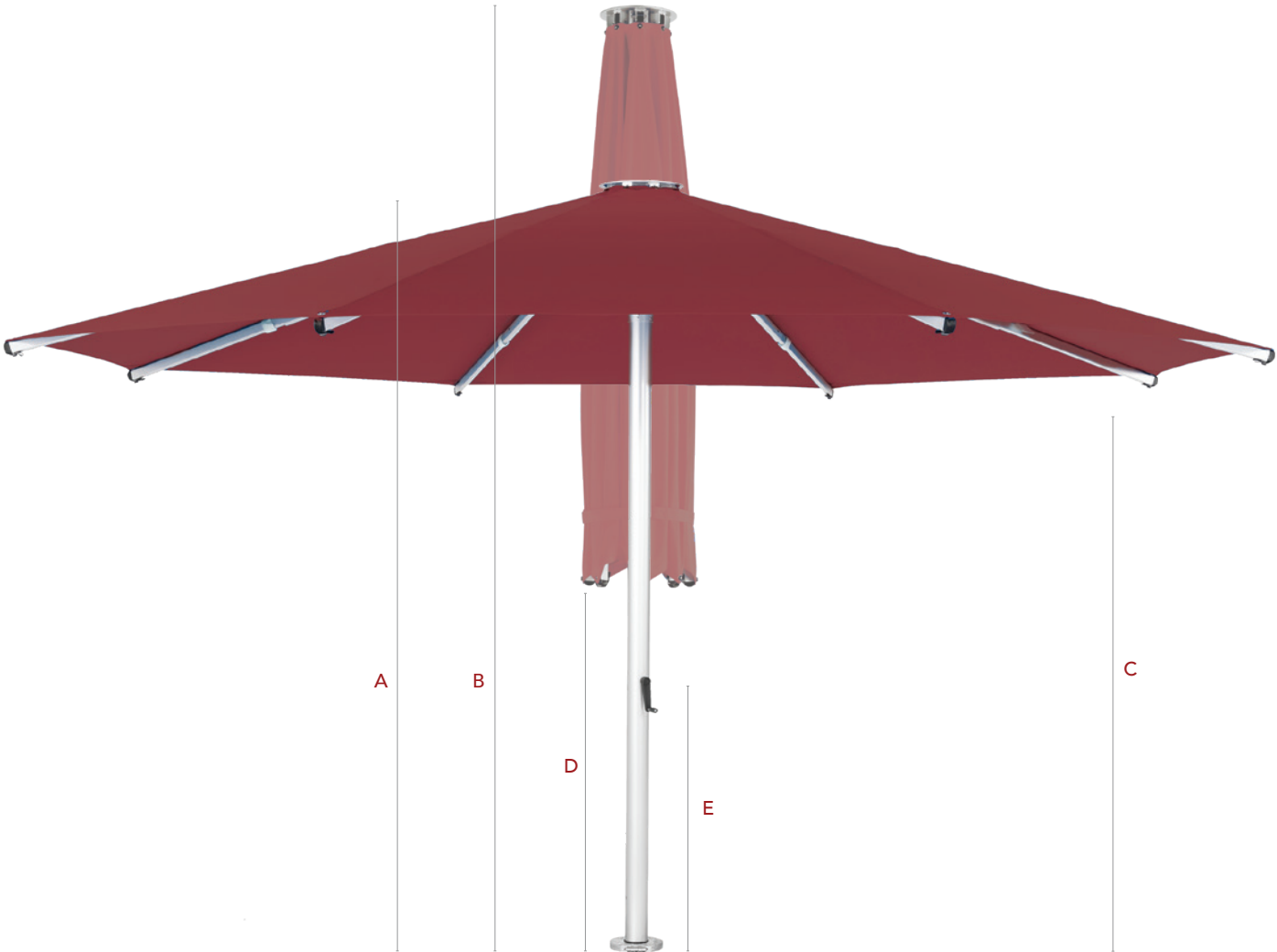
Multiple mounting options are available, either semi-permanent or base mounted.

BASE OPTIONS

UBG36RSM galvanized steel (page 73) | UBG40RSM galvanized steel (page 74) | UB480 heavy duty wheel (page 74)

UB150RSM aluminum shell (page 73)


Bolt-Down umbrellas



AVAILABLE FRAME SIZES

UBD16R: 16' OCTAGON

UBD13SQ: 13' SQUARE

| | |
|-------------------------|--|
| A: open height: 126" | A: open height: 126" |
| B: closed height: 168" | B: closed height: 168" |
| C: clearance: 98" | C: clearance: 96" |
| D: crank clearance: 43" | D: closed clearance: 52" |
| E: mast diameter: 4" | mast diameter: 4" |
| weight: 260 lbs. | E: weight: 220 lbs. |
| standard frame finish | SM  silver mist |

fabric color options on page 130



TELESCOPING MAST



DOUBLE REINFORCED JOINTS



EXTRUDED ALUMINUM MAST

FEATURES

As the telescoping cranks down, the top portion of the mast rises, allowing you to completely close the umbrella without having to move any furniture placed underneath.

4" diameter aluminum center pole with four internal strength channels, combined with the extruded aluminum ribs provide exceptional support and strength.

For easier installation of an umbrella this large, the mounts to a hinged spigot. This allows for the umbrella mast to be placed onto the spigot while the unit is on its side, prior to raising it to an upright position.

Reinforced grommets paired with an ultra-durable woven nylon wrap prevent the chance of fabric tearing from the frame.

Engineered to withstand 50-60 MPH sustained winds.

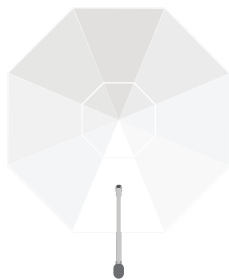
Stainless steel hardware throughout.

Please consult a licensed professional for in-ground or surface mounting installations.

BASE OPTIONS

UB550 heavy duty (page 75) | UBINGF (page 76) in-ground mount | UB20DP direct surface (page 75)

Cantilever umbrellas



AVAILABLE FRAME SIZES

UC13R: 13' OCTAGON

A: height: 110"

B: clearance: 82"

C: open depth: 163"

closed clearance: 30"

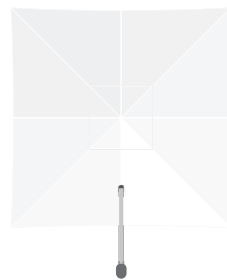
mast diameter: 3.3" x 5"

weight: 140 lbs.

frame finish

fabric color options on page 130

special feature: wind stabilizer bars and black polyester protective cover included.



UC10SQ: 10' SQUARE

A: height: 112"


B: clearance: 82"

C: open depth: 135"

closed clearance: 27"

mast diameter: 3.3" x 5"

weight: 120 lbs.

SM  silver mist



INFINITY TILT

EXTRUDED ALUMINUM ON ALL
CRITICAL JOINTS

EXTRUDED ALUMINUM MAST

FEATURES

Full 360° rotation, combined with the Infinity Tilt system, allows for countless tilt angles, providing hours of maximum shade regardless of the position of the sun.

The crank lift is built for commercial use, yet designed for smooth and effortless operation in any environment.

The mast and all critical joints are extruded aluminum, ensuring unmatched strength and durability.

Engineered to withstand 35 MPH winds. Included wind stabilizer kit increases by 5 MPH.

Stainless steel hardware throughout.

Please consult a licensed professional for in-ground or surface mounting installations.

BASE OPTIONS

UBG40R555 galvanized steel (page 74) | UB550 heavy duty (page 75) | UB12DP direct surface (page 75)

UBINGF in-ground mount (page 76)

Umbrella bases



UB50RD | resin coated concrete base for use with umbrella tables





weight | 50 lbs.

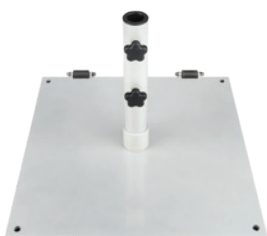
diameter | 16"

height | 7"

stem heights | n/a

stem diameter | 1.5"

finish | SM  silver mist | BL  black | BZ  bronze | WH  white



UB75SQ | steel plate base for stand alone umbrellas

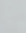
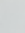


weight | 75 lbs.

dimension | 24 x 24"

height | .5"

stem height | 16"

stem diameter | 1.5"

finish | SM  silver mist | BL  black | BZ  bronze | WH  white

features | wheels for easy transport, can be secured directly to surface
not guaranteed in salt air



UB70RD | resin coated concrete base for use with umbrella tables





weight | 70 lbs.

diameter | 20"

height | 3.5"

stem height | 8"

stem diameter | 1.5"

finish | WH  white | SM  silver mist | BL  black | BZ  bronze

features | resin coated, concrete filled. 2 piece base, secondary weight ring fits onto base



UB100RSM | aluminum shell base


weight | 100 lbs.

diameter | 24"

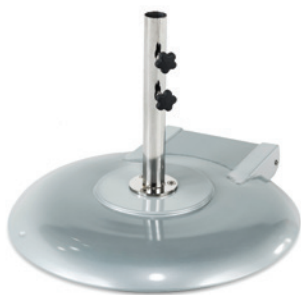
height | 4"

stem heights | 8" for tables | 18" for stand alone umbrellas

stem diameter | 1.5"

finish | SM  silver mist

features | concrete filled, wheels



UB150RSM | aluminum shell base

weight | 150 lbs.

diameter | 30"

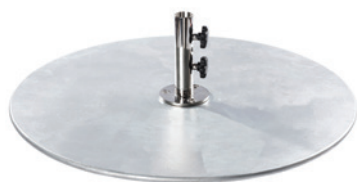
height | 4"

stem height | 18" for stand alone umbrellas

stem diameters | 1.5" / 2"

finish | SM ● silver mist

features | concrete filled, wheels



UBG24RSM | galvanized steel plate base

weight | 70 lbs.

diameter | 24"

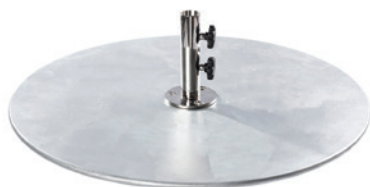
base height | .5"

stem height | 8" for tables

stem diameters | 1.5"

finish | SM ● silver mist

feature | can stack up to 3 of any G-Plates for increased weight and footprint



UBG30RSM | galvanized steel plate base

weight | 100 lbs.

diameter | 30"

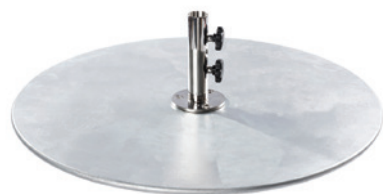
base height | .5"

stem height | 18" for stand alone umbrellas

stem diameters | 1.5"

finish | SM ● silver mist

feature | can stack up to 3 of any G-Plates for increased weight and footprint



UBG36RSM | galvanized steel plate base

weight | 150 lbs.

diameter | 36"

base height | .5"

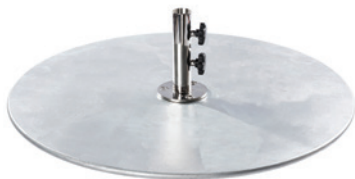
stem height | 18" for stand alone umbrellas

stem diameters | 1.5" / 2"

finish | SM ● silver mist

feature | can stack up to 3 of any G-Plates for increased weight and footprint

Umbrella bases



UBG40RSM | galvanized steel plate base

weight | 185 lbs.

diameter | 40"

base height | .5"

stem heights | 18" for stand alone umbrellas

stem diameters | 1.5" / 2"

finish | SM ● silver mist

feature | can stack up to 3 of any G-Plates for increased weight and footprint



UBG40R555 | galvanized steel plate stack

weight | 555 lbs.

diameter | 40"

base height | 2"

finish | SM ● silver mist

features | triple 40G stack is a required base option for the Cantilever, all 3 plates bolt together, spigot mounts to top plate



UB480 | heavy duty wheel base (minimum weight required 480 lbs)

weight | 80 lbs.

dimension | 33 x 34"

height | 10.5" with wheels | 6.5" w/o wheels

finish | SM ● silver mist

features | Holds three 16" pavers per quadrant (12 total pavers). Minimum paver weight per quadrant must be 105 lbs. (35 lbs. per paver) | for 2" diameter pole G-series umbrellas



UB550 | heavy duty base

weight | 550 lbs.

dimension | 45 x 45"

height | 5"

finish | SM ● silver mist

features | galvanized steel frame, smooth aluminum lid housing pavers, bolt-down or cantilever spigot mounts directly to universal deck plate on lid



UB12DP | direct surface mounting plate for cantilever

weight | 12 lbs.

diameter | 12"

height | 5"

finish | BL ● black

features | direct surface mounting deck plate, can be mounted to concrete or wood deck or any stable solid surface



UB20DP | direct surface mounting plate for bolt-down

weight | 20 lbs.

diameter | 20"

height | .5"

finish | SM ● silver mist

features | direct surface mounting deck plate, can be mounted to concrete, wood deck, or any stable solid surface

Umbrella bases



UBBD | camlock surface mount

weight | 9 lbs.

stem height | 18"

plate diameter | 4"

stem diameter | 1.5"

finish | SM ● silver mist

features | Direct surface mounting plate. Concrete or wood deck or any stable solid surface. Stem can be removed for storage. (HARDWARE NOT INCLUDED)



UBINGF | in-ground mount for bolt-down & cantilever

weight | 18 lbs.

diameter | 8"

height | 20"

finish | SM ● silver mist

features | in-ground mounting in soil, clay or concrete



Mixed Material seating

Nash series



NP

PRODUCT INFORMATION

| | |
|-------------------|---|
| JS55CASH-AA+frame | side chair dimensions h34 w22 sh18 sd16.5 sw15 |
| JS55BASH-AA+frame | barstool dimensions h43.75 w22 sh29.5 sd16.5 sw15 |
| frame finish | SB ● sand black RU ● distressed |
| wood finish | AA ● autumn ash veneer |
| materials | welded tubular steel veneer seat and back |
| feature | stacking |

Dalton series



NP

PRODUCT INFORMATION

| | |
|---------------|---|
| JS66CASH-AACL | side chair dimensions h34 w21.75 sh17 sd15.25 sw15 |
| JS66BASH-AACL | barstool dimensions h41.75 w22 sh29.25 sd16 sw15 |
| frame finish | CL ● clear coat |
| wood finish | AA ● autumn ash veneer |
| materials | welded tubular steel clear powder coat finish veneer seat and back seat includes metal accent slats |
| feature | stacking |

NV series



PRODUCT INFORMATION

| | |
|---------------|---|
| JS44CASH-AASB | side chair dimensions h33.5 w19.25 sh19 sd17 |
| JS44HASH-AASB | counter stool dimensions h40 w19.25 sh26 sd17 |
| JS44BASH-AASB | barstool dimensions h43.5 w19.25 sh29.5 sd17 |
| frame finish | SB ● sand black |
| wood finish | AA ● autumn ash |
| materials | solid steel rod ash veneer wood |
| seat options | wood upholstered |
| feature | upholstery found on pages 125 – 127 C.O.M. |

Hamilton series



PRODUCT INFORMATION

| | |
|---------------|--|
| JS10CNTV-NTPL | side chair dimensions h32 w18 sh18 sd16.5 |
| JS10HNTV-NTPL | counter stool dimensions h39 w18 sh26 sd16.5 |
| JS10BNTV-NTPL | barstool dimensions h42 w18 sh29 sd16.5 |
| frame finish | PL ● platinum powder coat |
| wood finish | NTV ● natural |
| materials | welded steel powder coat ash wood veneer |
| seat options | wood upholstery found on pages 125 – 127 C.O.M. |

Memphis series



PRODUCT INFORMATION

| | |
|------------------|---|
| JS33C+wood+frame | side chair dimensions h34.5 w17.25 sh18 sd18.5 |
| JS33H+wood+frame | counter stool dimensions h36.25 w16.5 sh26 sd15.5 |
| JS33B+wood+frame | barstool dimensions h40.5 w16.5 sh30.25 sd15.5 |
| JS337ASH-SB | bench dimensions w47.25 sh18 sd14 |
| frame finish | RU ● distressed SB ● sand black |
| wood finish | NT ● natural ash AA ● autumn ash GR ● gray ash |
| materials | welded box tube steel powder coat ash wood |
| seat options | wood upholstery found on pages 125 – 127 C.O.M. |

print or web page colors and overall dimensions are for reference only

Lincoln series



PRODUCT INFORMATION

| | |
|---------------------|---|
| JS22C+seat+back+CL | side chair dimensions h31 w16 sh18 sd13 sw15.5 |
| JS200C+seat+CL | backless chair dimensions h18 w16 sd13 sw15.5 |
| JS22H+seat+back+CL | counter stool dimensions h39 w18 sh26 sd13 sw15.5 |
| JS200H+seat+CL | backless counter stool dimensions h26 w18 sd13 sw15.5 |
| JS22B+seat+back+CL | barstool dimensions h42 w17.5 sh29 sd13 sw15.5 |
| JS200B+seat+back+CL | backless barstool dimensions h29 w17.5 sd13 sw15.5 |
| frame finish | CL ● clear coat |
| back options | AA ● autumn ash wood CL ● clear coat stamped steel |
| seat options | wood upholstery found on pages 125– 127 C.O.M. |
| materials | welded steel powder coat ash wood |
| feature | steel swivel glides with nylon floor protectors |

Henry series



PRODUCT INFORMATION

| | |
|--------------------|--|
| JS88C+wood+frame | side chair dimensions h33.5 w19 sh17.5 sd15.5 sw16 |
| JS88H+wood+frame | counter stool dimensions h38 w19 sh26 sd15.5 sw16 |
| JS88B+wood+frame | barstool dimensions h41 w19 sh29 sd15.5 sw16 |
| JS800H +wood+frame | backless counter stool dimensions h26 w15.5 sd15.5 |
| JS800B+wood+frame | backless barstool dimensions h30.5 w15.5 |
| frame finish | RU ● distressed SB ● sand black |
| seat options | wood upholstery found on pages 125 – 127 C.O.M. |
| seat wood finish | NT ● natural ash AA ● autumn ash |
| materials | welded tubular steel ash wood |

Lima Clear Coat series



TRENT



PRODUCT INFORMATION

| | |
|-----------------------|--|
| 2160C+seat+CL | side chair dimensions h32.5 w17.25 sh17.5 sd16.5 |
| 2160H+seat+CL | counter stool dimensions h39.5 w17 sh27 sd16.5 |
| 2160B+seat+CL | barstool dimensions h42.5 w17.25 sh29 sd16.5 |
| 2510H+seat+CL | backless counter stool dimensions h27 w16 sd15.75 |
| 2510B+seat+CL | backless barstool dimensions h30 w16 sd15.75 |
| frame finish | CL ● clear coat |
| standard vinyl colors | RDV ● red LBV ● light brown BUV ● burgundy GNV ● green DBV ● dark brown BLV ● black |
| wood seat colors | ASH ● autumn ash NTW ● natural CHW ● light cherry MHW ● mahogany WAW ● walnut BLW ● black |
| relic seat colors | AW ○ antique wash CS ● chestnut FH ● farmhouse KP ● knotty pine RC ● rustic copper |
| materials | welded steel construction powder coat |
| features | upgraded vinyl options found on pages 125 – 127 C.O.M. |

The Screw barstool



NP

PRODUCT INFORMATION

| | |
|---------------------|---|
| JS22SASH+back+frame | barstool dimensions h40-44 w19 sh26-30 sd15.75 sw15.75 |
| JS200SASH+frame | backless barstool dimensions h26-30 w19 sh26-30 sd15.75 sw15.75 |
| frame finish | CL ● clear coat SB ● sand black |
| seat wood finish | AA ● autumn ash |
| back options | AA ● autumn ash wood SB ● sand black CL ● clear coat stamped steel |
| materials | welded tubular steel ash wood |
| feature | adjustable to counter or bar height |



Steel seating

Lima Silver Mist series



PRODUCT INFORMATION

| | |
|-----------------------|--|
| 2160C+seat+SM | side chair dimensions h33 w17.25 sh17.5 sd16.5 |
| 2160B+seat+SM | barstool dimensions h43.75 w17.25 sh30.5 sd16.5 |
| frame finish | silver mist powder coat |
| standard vinyl colors | RDV ● red LBV ● light brown BUV ● burgundy GNV ● green DBV ● dark brown BLV ● black |
| wood seat colors | ASH ● autumn ash NTW ● natural CHW ● light cherry MHW ● mahogany WAW ● walnut BLW ● black |
| relic seat colors | AW ○ antique wash CS ● chestnut FH ● farmhouse KP ● knotty pine RC ● rustic copper |
| materials | welded 18 gauge steel |
| features | upgraded vinyl options found on pages 125 – 127 C.O.M. |

Lima series



PRODUCT INFORMATION

| | |
|-----------------------|--|
| 2160C+seat+SB | ladder back side chair dimensions h33 w17.25 sh17.5 sd16.5 |
| 2160B+seat+SB | ladder back barstool dimensions h43.75 w17.25 sh30.5 sd16.5 |
| 2160S+seat+SB | ladder back swivel barstool dimensions h42.5 w17.25 sh30.5 sd16.5 |
| frame finish | sand black powder coat |
| standard vinyl colors | RDV ● red LBV ● light brown BUV ● burgundy GNV ● green DBV ● dark brown BLV ● black |
| wood seat colors | ASH ● autumn ash NTW ● natural CHW ● light cherry MHW ● mahogany WAW ● walnut BLW ● black |
| relic seat colors | AW ○ antique wash CS ● chestnut FH ● farmhouse KP ● knotty pine RC ● rustic copper |
| materials | welded 18 gauge steel |
| features | upgraded vinyl options found on pages 125 – 127 C.O.M. |

Axel series



PRODUCT INFORMATION

2140C+seat+SM side chair dimensions | h33 | w17.25 | sh18.5 | sd16.5

2140B+seat+SM barstool dimensions | h43.75 | w17.25 | sh30.5 | sd16.5

frame finish silver mist powder coat

standard vinyl colors RDV ● red | LBV ● light brown | BUV ● burgundy | GNV ● green | DBV ● dark brown
BLV ● black

wood seat colors ASH ● autumn ash | NTW ● natural | CHW ● light cherry | MHW ● mahogany
WAW ● walnut | BLW ● black

relic seat colors AW ○ antique wash | CS ● chestnut | FH ● farmhouse | KP ● knotty pine | RC ● rustic copper

materials welded 18 gauge steel

features upgraded vinyl options found on pages 125 – 127 | C.O.M.

Dale series



PRODUCT INFORMATION

| | |
|---------------------------|--|
| 2150C+seat+back+SB | solid wood back side chair dimensions h33 w17.25 sh17.5 sd16.5 |
| 2150B+seat+back+SB | solid wood back barstool dimensions h43.75 w17.25 sh30.5 sd16.5 |
| 2150S+seat+back+SB | solid wood back swivel barstool dimensions h42.5 w17.25 sh30.5 sd16.5 |
| frame finish | sand black powder coat |
| standard vinyl colors | RDV ● red LBV ● light brown BUV ● burgundy GNV ● green DBV ● dark brown BLV ● black |
| wood seat and back colors | NTW ● natural CHW ● light cherry MHW ● mahogany WAW ● walnut |
| materials | welded 18 gauge steel |
| features | upgraded vinyl options found on pages 125 – 127 C.O.M. |

Espy series



PRODUCT INFORMATION

| | |
|---------------------------|--|
| 2151C+seat+back+SB | slotted wood back side chair dimensions h33 w17.25 sh17.5 sd16.5 |
| 2151B+seat+back+SB | slotted wood back barstool dimensions h43.75 w17.25 sh30.5 sd16.5 |
| 2151S+seat+back+SB | slotted wood back swivel barstool dimensions h42.5 w17.25 sh30.5 sd16.5 |
| frame finish | sand black powder coat |
| standard vinyl colors | RDV ● red LBV ● light brown BUV ● burgundy GNV ● green DBV ● dark brown BLV ● black |
| wood seat and back colors | NTW ● natural CHW ● light cherry MHW ● mahogany WAW ● walnut |
| materials | welded 18 gauge steel |
| features | upgraded vinyl options found on pages 125 – 127 C.O.M. |

Darby series



PRODUCT INFORMATION

| | |
|---------------------------|--|
| 2152C+seat+back+SB | circle wood back side chair dimensions h33 w17.25 sh17.5 sd16.5 |
| 2152B+seat+back+SB | circle wood back barstool dimensions h43.75 w17.25 sh30.5 sd16.5 |
| 2152S+seat+back+SB | circle wood back swivel barstool dimensions h42.5 w17.25 sh30.5 sd16.5 |
| frame finish | sand black powder coat |
| standard vinyl colors | RDV ● red LBV ● light brown BUV ● burgundy GNV ● green DBV ● dark brown BLV ● black |
| wood seat and back colors | NTW ● natural CHW ● light cherry MHW ● mahogany WAW ● walnut |
| materials | welded 18 gauge steel |
| features | upgraded vinyl options found on pages 125 – 127 C.O.M. |

Marietta series



PRODUCT INFORMATION

2163C+seat+SB window pane side chair dimensions | h33 | w17.25 | sh17.5 | sd16.5

2163B+seat+SB window pane barstool dimensions | h43.75 | w17.25 | sh30.5 | sd16.5

2163S+seat+SB window pane swivel barstool dimensions | h42.5 | w17.25 | sh30.5 | sd16.5

frame finish sand black powder coat

standard vinyl colors RDV ● red | LBV ● light brown | BUV ● burgundy | GNV ● green | DBV ● dark brown
BLV ● black

wood seat colors ASH ● autumn ash | NTW ● natural | CHW ● light cherry | MHW ● mahogany
WAW ● walnut | BLW ● black

relic seat colors AW ○ antique wash | CS ● chestnut | FH ● farmhouse | KP ● knotty pine | RC ● rustic copper

materials welded 18 gauge steel

features upgraded vinyl options found on pages 125 – 127 | C.O.M.

Polk series



PRODUCT INFORMATION

| | |
|-----------------------|--|
| 2161C+seat+SB | perforated back side chair dimensions h33 w17.25 sh17.5 sd16.5 |
| 2161B+seat+SB | perforated back barstool dimensions h43.75 w17.25 sh30.5 sd16.5 |
| frame finish | sand black powder coat |
| standard vinyl colors | RDV ● red LBV ● light brown BUV ● burgundy GNV ● green DBV ● dark brown BLV ● black |
| wood seat colors | ASH ● autumn ash NTW ● natural CHW ● light cherry MHW ● mahogany WAW ● walnut BLW ● black |
| relic seat colors | AW ○ antique wash CS ● chestnut FH ● farmhouse KP ● knotty pine RC ● rustic copper |
| materials | welded 18 gauge steel |
| features | upgraded vinyl options found on pages 125 – 127 C.O.M. |

Akrin series



PRODUCT INFORMATION

2130C+seat+SB cross back side chair dimensions | h33 | w17.25 | sh17.5 | sd16.5

2130B+seat+SB cross back barstool dimensions | h43.75 | w17.25 | sh30.5 | sd16.5

2130S+seat+SB cross back swivel barstool dimensions | h42.5 | w17.25 | sh30.5 | sd16.5

frame finish sand black powder coat

standard vinyl colors RDV ● red | LBV ● light brown | BUV ● burgundy | GNV ● green | DBV ● dark brown
BLV ● black

wood seat colors ASH ● autumn ash | NTW ● natural | CHW ● light cherry | MHW ● mahogany
WAW ● walnut | BLW ● black

relic seat colors AW ○ antique wash | CS ● chestnut | FH ● farmhouse | KP ● knotty pine | RC ● rustic copper

materials welded 18 gauge steel

features upgraded vinyl options found on pages 125 – 127 | C.O.M.

Troy series



PRODUCT INFORMATION

| | |
|-----------------------|--|
| 2090C+seat+SB | slat back side chair dimensions h33 w17.25 sh17.5 sd16.5 |
| 2090B+seat+SB | slat back barstool dimensions h43.75 w17.25 sh30.5 sd16.5 |
| frame finish | sand black powder coat |
| standard vinyl colors | RDV ● red LBV ● light brown BUV ● burgundy GNV ● green DBV ● dark brown BLV ● black |
| wood seat colors | ASH ● autumn ash NTW ● natural CHW ● light cherry MHW ● mahogany WAW ● walnut BLW ● black |
| relic seat colors | AW ○ antique wash CS ● chestnut FH ● farmhouse KP ● knottty pine RC ● rustic copper |
| materials | welded 18 gauge steel |
| features | upgraded vinyl options found on pages 125 – 127 C.O.M. |

Trent series



PRODUCT INFORMATION

2510B+seat+SB metal barstool dimensions | h30 | w16 | sd15.75

2510B+seat+CL metal barstool dimensions | h30 | w16 | sd15.75

2510H seat+CL metal counter stool dimensions | h27 | w16 | sh27 | sd15.75

frame finish CL ● clear coat | SB ● sand black

standard vinyl colors RDV ● red | LBV ● light brown | BUV ● burgundy | GNV ● green
DBV ● dark brown | BLV ● black

wood seat colors ASH ● autumn ash | NTW ● natural | CHW ● light cherry | MHW ● mahogany
WAW ● walnut | BLW ● black

relic seat colors AW ○ antique wash | CS ● chestnut | FH ● farmhouse | KP ● knotty pine | RC ● rustic copper

materials welded 18 gauge steel

features upgraded vinyl options found on pages 125 – 127 | C.O.M.





Wood seating

Emma series



PRODUCT INFORMATION

| | |
|-------------------|---|
| ZWC22+finish+seat | side chair dimensions h32.5 w17 sh17.75 sd16 sw17 |
| ZWB22+finish+seat | barstool dimensions h42.5 w17 sh30 sd14.75 sw16 |
| frame finish | DW ● dark walnut NT ● natural |
| seat options | wood graded vinyls found on pages 125 – 127 C.O.M. |
| custom option | wood reveal upholstery on seat and back |
| materials | european beechwood |
| feature | modern mid-century design european manufactured |
| construction | mortis and tenon metal hardware |

Sofia series



PRODUCT INFORMATION

| | |
|-------------------|---|
| ZWC88+finish+seat | side chair dimensions h33.5 w18 sh18.75 sd15.5 sw15.5 |
| ZWB88+finish+seat | barstool dimensions h42 w18 sh30 sd15.5 sw16 |
| frame finish | BW ● black walnut CS ● vintage |
| seat options | wood graded vinyls found on pages 125 – 127 C.O.M. |
| materials | european beechwood |
| feature | steamed bentwood european manufactured |
| construction | mortis and tenon metal hardware |

Giulia series



PRODUCT INFORMATION

| | |
|-------------------|---|
| ZWC66+finish+seat | side chair dimensions h30 w17 sh18 sd15 sw15 |
| ZWB66+finish+seat | barstool dimensions h42.5 w17 sh30 sd14.75 sw15 |
| frame finish | DW ● dark walnut NT ● natural BL ● black |
| seat options | wood graded vinyls found on pages 125 – 127 C.O.M. |
| materials | european beechwood |
| feature | space saving design european manufactured |

Dover series



PRODUCT INFORMATION

ZWC305+finish+seat side chair dimensions | h32.5 | w18 | sh18.5 | sd17 | sw17.5

ZWB305+finish+seat barstool dimensions | h41 | w16.5 | sh30 | sd16.25 | sw16.25

frame finish DW ● dark walnut | BL ● black

seat options wood | graded vinyls found on pages 125 – 127 | C.O.M.

materials european beechwood

construction mortis and tenon | metal hardware

feature barstool—brass footrest | satin nickel finish available upon request | european manufactured

Aston series



PRODUCT INFORMATION

| | |
|--------------------|---|
| ZWC304+finish+seat | side chair dimensions h31.75 w17.25 sh18 sd16 sw17.25 |
| ZWB304+finish+seat | barstool dimensions h43.75 w17.25 sh30.75 sd16 sw17.25 |
| frame finish | DW ● dark walnut BL ● black |
| seat options | wood graded vinyls found on pages 125 – 127 C.O.M. |
| materials | european beechwood |
| construction | mortis and tenon metal hardware |
| feature | brass footrest satin nickel finish available upon request european manufactured |

Berkeley series



PRODUCT INFORMATION

| | |
|-----------------------|---|
| ZWC101+finish+seat | ladder back side chair dimensions h34 w17.5 sh18.5 sd17 |
| ZWB101+finish+seat | ladder back barstool dimensions h44 w17.5 sh29.5 sd16 |
| frame finish | DM ● mahogany NT ● natural BL ● black DW ● walnut |
| wood seat finishes | DM ● mahogany NT ● natural BL ● black DW ● walnut |
| standard vinyl colors | LBV ● light brown BUV ● burgundy GNV ● green BLV ● black RDV ● red DBV ● dark brown |
| seat options | wood graded vinyls found on pages 125 – 127 C.O.M. |
| materials | european beechwood |
| construction | mortis and tenon metal hardware |
| feature | brass footrest standard on barstool satin nickel finish available upon request european manufactured |

Stockton series



PRODUCT INFORMATION

| | |
|-----------------------|---|
| ZWB680+finish+seat | backless barstool dimensions h30 w17.25 d15.75 sw16 |
| frame finish | DM ● mahogany NT ● natural BL ● black DW ● walnut |
| wood seat finishes | DM ● mahogany NT ● natural BL ● black DW ● walnut |
| relic seat colors | AW ○ antique wash CS ● chestnut FH ● farmhouse KP ● knotty pine RC ● rustic copper |
| standard vinyl colors | LBV ● light brown BUV ● burgundy GNV ● green BLV ● black RDV ● red DBV ● dark brown |
| seat options | wood graded vinyls found on pages 125 – 127 C.O.M. |
| materials | european beechwood |
| construction | mortis and tenon metal hardware |
| feature | brass footrest standard on barstool satin nickel finish available upon request european manufactured |

Cornell series



PRODUCT INFORMATION

| | |
|--------------------|---|
| ZWC302+finish+seat | side chair dimensions h35.5 w19.25 sh18 sd16 |
| ZWB302+finish+seat | barstool dimensions h43.5 w18.75 sh29.5 sd16 sw17.75 |
| frame finish | DW ● dark walnut BL ● black |
| seat options | wood graded vinyls found on pages 125 – 127 C.O.M. |
| materials | european beechwood |
| construction | mortis and tenon metal hardware |
| feature | brass footrest standard on barstool satin nickel finish available upon request european manufactured |

Columbia series



PRODUCT INFORMATION

ZWC303+finish+seat side chair dimensions | h35.5 | w18.5 | sh18.5 | sd16 | sw18.5

ZWB303+finish+seat barstool dimensions | h43.5 | w17.75 | sh29.5 | sd16 | sw17.75

frame finish DW ● dark walnut | BL ● black

seat options wood | graded vinyls found on pages 125 – 127 | C.O.M.

materials european beechwood

construction mortis and tenon | metal hardware

feature brass footrest | satin nickel finish available upon request | european manufactured



Tables indoor

Wood Veneer table tops



VN2430 | 24 x 30

VN3030 | 30 x 30

VN3636 | 36 x 36

VN3042 | 30 x 42

VN3048 | 30 x 48

VN3060 | 30 x 60

VN3072 | 30 x 72

VN24 | 24R

VN30 | 30R

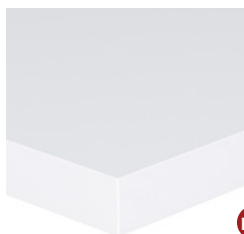
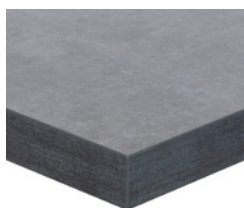
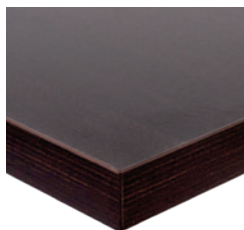
VN36 | 36R

VN48 | 48R

finish | AA ● autumn ash | NT ● natural

materials | 1 1/4" thick ash wood edge with ash wood veneer inlay

Midtown table tops



NC

finish code+size | 24 x 24

finish code+size | 24 x 30

finish code+size | 30 x 30

finish code+size | 36 x 36

finish code+size | 30 x 42

finish code+size | 30 x 48

finish code+size | 30 x 60

finish code+size | 30 x 72

finish code+size | 24R

finish code+size | 30R

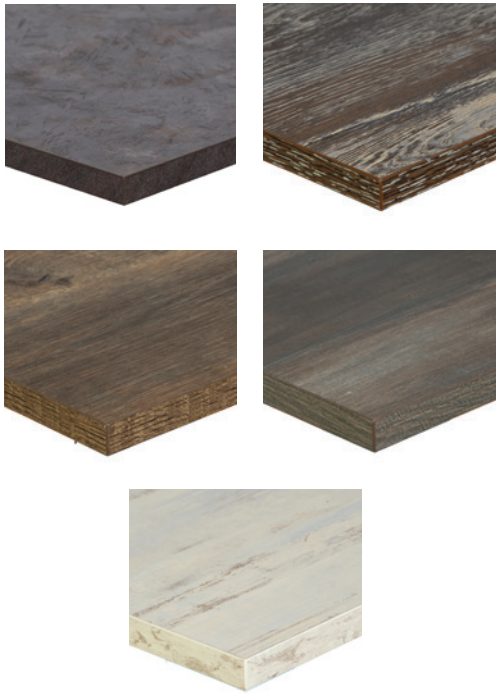
finish code+size | 36R

finish code+size | 45R

finish | CNT ● textured concrete | EST ● textured espresso
 SO ● textured sawmill oak | DW ● textured driftwood
 FF ● textured frosted slate | PP ● planked pine
 WH ○ white

materials | 1 7/8" edge with honeycomb core | melamine surface
 with matching ABS edge

Relic table tops



thickness+finish code+size | 24 x 30

thickness+finish code+size | 30 x 30

thickness+finish code+size | 36 x 36

thickness+finish code+size | 30 x 42

thickness+finish code+size | 30 x 48

thickness+finish code+size | 30 x 60

thickness+finish code+size | 30 x 72

thickness+finish code+size | 30R

thickness+

thickness+finish code+size | 48R

thickness | 1" or 2" thick MDF core

materials | melamine | matching PVC edge

finish | RC ● rustic copper | FH ● farmhouse | KP ● knotty pine
CS ● chestnut | AW ● antique wash





Wireless table charging NP



np-key | magnetic key to remove batteries



np-batt | spare battery



np-charge | battery charging tray and cord *batteries not included

np-topkit-1 | single on-top starter kit (on-top coil, table dock, battery, key & charger tray with cord) *includes one battery

np-flatkit-1 | single flat mount starter kit (flat coil, table dock, battery, key & charger tray with cord) Includes installation *includes one battery

np-topkit-4 | np-topkit-4 | 4 pack on-top starter kit (4 on-top coils, 4 table docks, 4 batteries, 1 key, & 1 charger tray with cord)

np-topp | wireless charger-on-top pack (on top coil, table dock & battery)

np-flatp | wireless charger, flat pack (flat coil, table dock, battery & installation) see tops with flat chargers



Indoor bases



Jaxon

BXS-2020 | 20" cross base | dining height

BXS-2020T | 20" cross base | bar height

BXS-2424 | 24" cross base | dining height

BXS-2424T | 24" cross base | bar height

top plate | 11 3/4" bolt on plate

finish | sand black

materials | stamped steel

column | 3" square

feature | unique vertical design



Jaxon

BXS-0024 | 24" end base | dining height
2-pc setBXS-0024T | 24" end base | bar height
2-pc set

top plate | 11 3/4" bolt on plates

finish | sand black

materials | stamped steel

column | 3" square

feature | unique vertical design



Luna

BXC-2020 | 20" cross base | dining height

BXC-2020T | 20" cross base | bar height

BXC-2424 | 24" cross base | dining height

BXC-2424T | 24" cross base | bar height

top plate | 11 3/4" bolt on plate

finish | sand black

materials | stamped steel

column | 3" square

feature | unique vertical design



Luna

BXC-0024 | 24" end base | dining height
2-pc setBXC-0024T | 24" end base | bar height
2-pc set

top plate | 11 3/4" bolt on plates

finish | sand black

materials | stamped steel

column | 3" square

feature | unique vertical design



Uptown

LP-18R | 18" round base | dining height

LP-18RT | 18" round base | bar height

LP-20R | 20" round base | dining height

LP-20RT | 20" round base | bar height

LP-24R | 24" round base | dining height

LP-24RT | 24" round base | bar height

top plate | 11 3/4" bolt on plate

finish | sand black | white

materials | stamped steel

column | 3" round

features | thin profile design



Uptown

LP-18SQ | 18" square base | dining height

LP-18SQT | 18" square base | bar height

LP-20SQ | 20" square base | dining height

LP-20SQT | 20" square base | bar height

LP-24SQ | 24" square base | dining height

LP-24SQT | 24" square base | bar height

top plate | 11 3/4" bolt on plate

finish | sand black | white

materials | stamped steel

column | 3" square

features | thin profile design

NC

NC

Indoor bases



Uptown

LP-0024SQ | 24" end base | dining height | 2-pc set

LP-0024SQ | 24" end base | bar height | 2-pc set

top plate | 11 3/4" bolt on plate

finish | sand black | white

materials | stamped steel

column | 3" square

feature | thin profile design

Indoor



STB+size+height | round base

base diameter | 18 | 22 | 30

finish | sand black

materials | stamped steel

top plate | welded | BP bolt on plate

dining | C counter | T bar height

3" or 4" diameter columns (3" column welded plate 7.8 x 7.8" | 4" column welded plate 10.6 x 10.6" | 3" or 4" column bolt-on plate 11.8 x 11.8")

Indoor foot ring



STB+base size+TFR | base with foot ring

available in all cross and round sizes

finish | sand black

materials | stamped steel

top plate | welded

feature | 3" or 4" diameter columns (3" column welded plate 7.8 x 7.8" | 4" column welded plate 10.6 x 10.6")

Adele



PHTB18RCH | 18" round | dining

PHTB18RCHT | 18" round | bar height

PHTB24RCH | 24" round | dining

PHTB24RCHT | 24" round | bar height

finish | chrome

materials | steel

Niles



PHTB500 | round base | dining height

PHTB500T | round base | bar height

base diameter | 20

finish | sand black

materials | cast iron

feature | ornate base plate

Indoor



ST+size+height | cross base

base spread | 22 x 22 | 24 x 30 | 30 x 30
36 x 36

finish | sand black

materials | stamped steel

top plate | welded | BP bolt on plate

dining | C counter | T bar height

3" or 4" diameter columns (3" column welded plate 7.8 x 7.8" | 4" column welded plate 10.6 x 10.6" | 3" or 4" column bolt-on plate 11.8 x 11.8")

Indoor



STB-0022 | dining height (sold separately)

STB-0022CBP | counter height (sold separately)

STB-0022T | bar height (sold separately)

base spread | 5 x 22 | 2 required per top

finish | sand black

materials | stamped steel

top plate | welded | BP bolt on plate

feature | ADA capabilities

(3" column welded plate 7.8 x 7.8" | 3" column bolt-on plate 11.8 x 11.8")

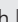
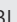
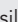
Indoor / Outdoor bases



Alpha indoor | outdoor

PHTBBD+finish | bolt-down base

PHTBBDT+finish | bolt-down base

finish | SS  stainless | BL  black | SV  silver

materials | 304 stainless steel

dining or bar height

feature | ADA capabilities | bolt down



Stamped chrome indoor

STB-2222CH cross | 22 x 22

STB-2430CH cross | 24 x 30

STB-3030CH cross | 30 x 30

STB-0022CH end | 5 x 22 | 2 per top

finish | chrome

materials | stamped steel

features | 3" or 4" column

dining | counter | bar height
end bases only available with 3" column

Elite indoor | outdoor

PHTB+size+SQSS | square | dining height

PHTB+size+SQSST | square | bar height

base spread | 18 x 18 | 24 x 24

top plate | 11.8" x 11.8"

materials | 304 brushed stainless steel

dining or bar height



Elite indoor | outdoor

PHTB+size+RSS | round | dining height

PHTB+size+RSST | round base bar height

base diameter | 18 | 24

top plate | 11.8" x 11.8"

materials | 304 brushed stainless steel

dining or bar height



Elite indoor | outdoor

PHTB0024SS | dining height (sold as pair)

PHTB0024SST | bar height (sold as pair)

base spread | 4 x 24

top plate | 11.8" x 11.8"

materials | 304 brushed stainless steel

feature | ADA capabilities

Elite double column
indoor | outdoor

PHTB1630SS | dining height

PHTB1630SST | bar height

base spread | 16 x 30

top plate | 11.8" x 11.8"

materials | 304 brushed stainless steel

Indoor bases



Corner Post leg

TB-SQ2 | 2" square post | dining height
(sold as set of 4)

TB-SQ3 | 3" square post | dining height
(sold as set of 4)

finish | sand black

materials | steel and powder coat

feature | ADA capabilities



NV corner leg

NV4L-SB | dining height
(sold as set of 4)

NV4L-SBC | counter height
(sold as set of 4)

NV4L-SBT | bar height
(sold as set of 4)

finish | black

materials | solid rod steel

feature | matches NV chair series
ADA capabilities



Cantilever

TB-C22 | bracket 22" long

TB-C33 | bracket 33" long

TB-P125 | pin leg 1.25

finish | glossy black powder coat
black wrinkle (pin leg)

materials | welded steel

feature | wall mounting



Bolt-down base

TB-BD | base | dining height

TB-BDT | base | bar height

TB-BDC | base | counter height

finish | black wrinkle

materials | welded steel

feature | cover plate



I-beam

JSTB3636+height | 36 x 36

JSTB3048+height | 30 x 48

JSTB3648+height | 36 x 48

JSTB3060+height | 30 x 60

JSTB3660+height | 36 x 60

JSTB3072+height | 30 x 72

JSTB3672+height | 36 x 72

finish | black powder coat

materials | steel

features | electric outlet capability | frame manufactured
to conceal hardwiring
(Outlets & wiring not included. Cover plates included for unused outlet cutouts.)

dining height BL or bar height BLT

Trash receptacles

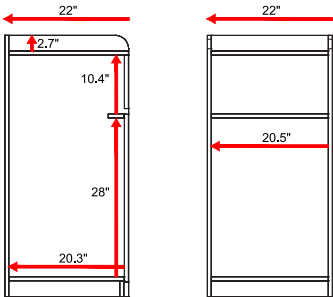


TE4622CS | trash receptacle

finish | CS ● chestnut

material | melamine | MDF

feature | holds standard 35 gallon plastic container, size 19"w x 19"D x 27"H



TE4622KP | trash receptacle

finish | KP ● knotty pine

material | melamine | MDF

feature | holds standard 35 gallon plastic container, size 19"w x 19"D x 27"H

Trash receptacles



TE4622RC | trash receptacle

finish | RC ● rustic copper

material | melamine | MDF

feature | holds standard 35 gallon plastic container, size 19"w x 19"D x 27"H



TE4622AW | trash receptacle

finish | AW ● antique wash

material | melamine | MDF

feature | holds standard 35 gallon plastic container, size 19"w x 19"D x 27"H



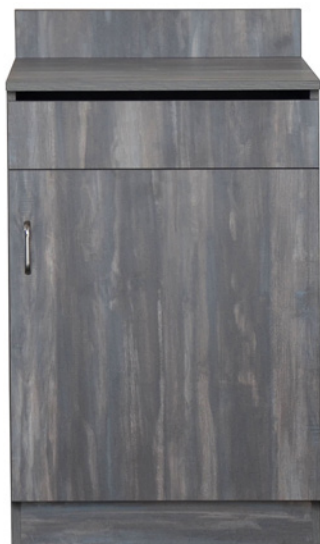
TE4622FH | trash receptacle

finish | FH ● farmhouse

material | melamine | MDF

feature | holds standard 35 gallon plastic container, size 19"w x 19"D x 27"H

Server stations – single door

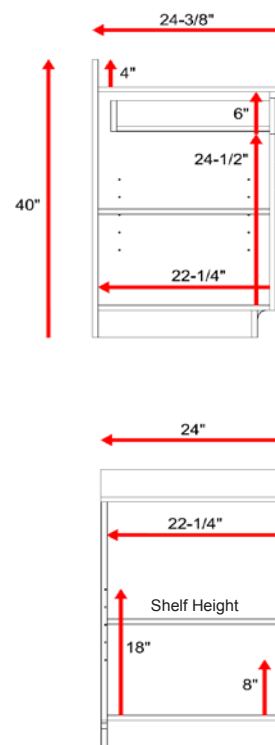


WS4024CS | server station

finish | CS ● chestnut

material | melamine | MDF

feature | drawer and inside shelf



WS4024K | server station

finish | KP ● knotty pine

material | melamine | MDF

feature | drawer and inside shelf

Server stations – single door



WS4024RC | server station

finish | RC ● rustic copper

material | melamine | MDF

feature | drawer and inside shelf



WS4024AW | server station

finish | AW ● antique wash

material | melamine | MDF

feature | drawer and inside shelf



WS4024FH | server station

finish | FH ● farmhouse

material | melamine | MDF

feature | drawer and inside shelf

Server stations – double door

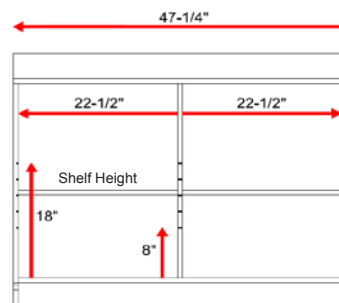
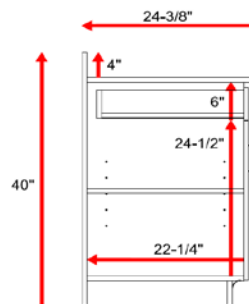


WS4047CS | server station

finish | CS ● chestnut

material | melamine | MDF

feature | 2 drawers and 2 inside shelves



WS4047KP | server station

finish | KP ● knotty pine

material | melamine | MDF

feature | 2 drawers and 2 inside shelves

Server stations – double door



WS4047RC | server station

finish | RC ● rustic copper

material | melamine | MDF

feature | 2 drawers and 2 inside shelves



WS4047AW | server station

finish | AW ● antique wash

material | melamine | MDF

feature | 2 drawers and 2 inside shelves



WS4047FH | server station

finish | FH ● farmhouse

material | melamine | MDF

feature | 2 drawers and 2 inside shelves

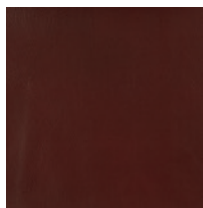
Steel seating grade 1 vinyl seat options



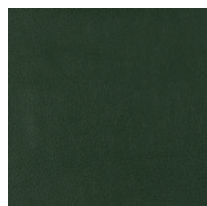
Red



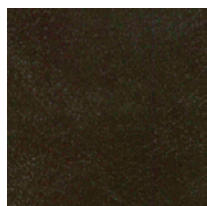
Light Brown



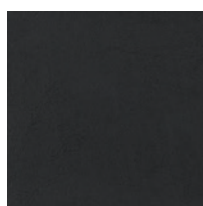
Burgundy



Green



Dark Brown



Black

For products on pages 85, 88-98, 106 & 107

Steel seating wood seat options



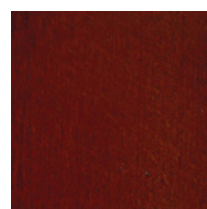
Natural



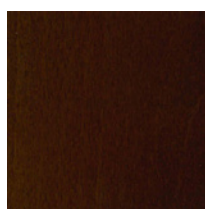
Light Cherry



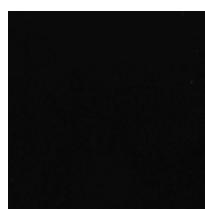
Autumn Ash



Mahogany



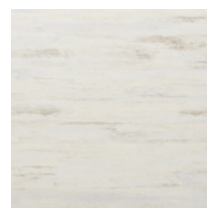
Walnut



Black

For products on pages 85, 88-98

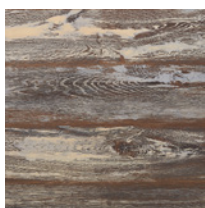
Steel seating Relic seat options



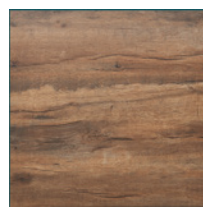
Antique Wash



Chestnut



Farmhouse



Knotty Pine



Rustic Copper

Grade 2 Vinyl



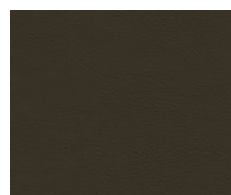
American Beauty
VNS-001



Aqua Green
VNS-002



Avocado
VNS-003



Black Walnut
VNS-004



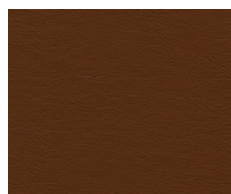
Blue Ridge
VNS-005



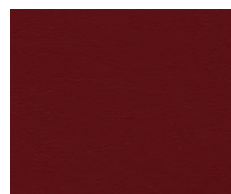
Bright Yellow
VNS-006



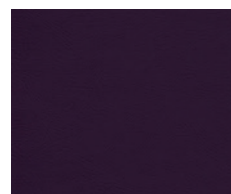
Burgundy
VNS-007



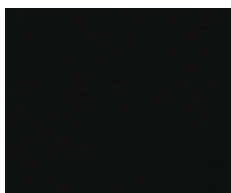
Chocolate Chip
VNS-008



Claret
VNS-009



Concord
VNS-010



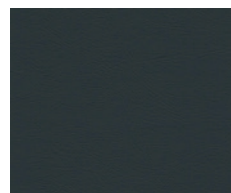
Ebony
VNS-013



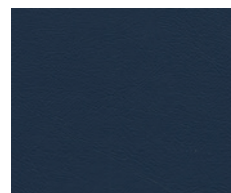
Forest
VNS-016



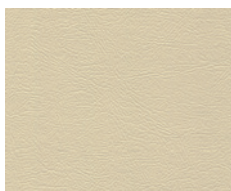
Georgia Clay
VNS-017



Graphite
VNS-018



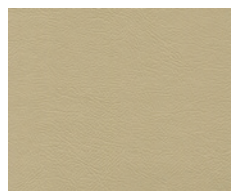
Indigo
VNS-020



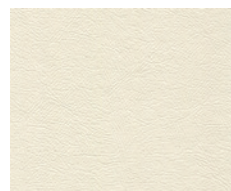
Ivory
VNS-021



Kelly Green
VNS-023



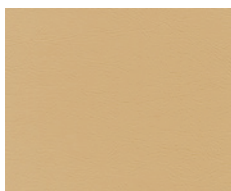
Mushroom
VNS-025



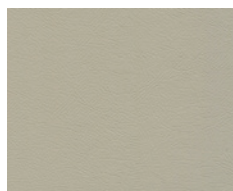
Pearl
VNS-027



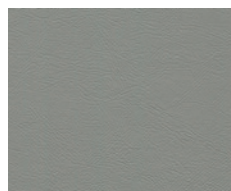
Royal Blue
VNS-029



Sand
VNS-030



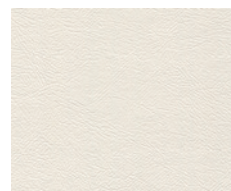
Silver Grey
VNS-031



Silver Surf
VNS-032



Sky Blue
VNS-033



Super White
VNS-034



Tan
VNS-035



Tea Rose
VNS-037



Tiger Lily
VNS-038

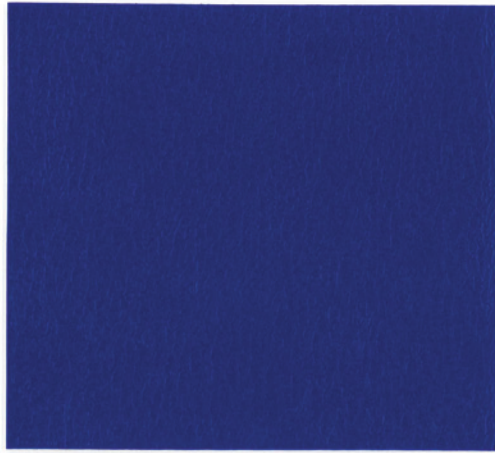


Yellow Gold
VNS-040



Yew Green
VNS-041

Grade 3 Vinyl



AM 37 Royal



AM 53 Bright White



AM 43 Adobe White



AM 59 Parchment



AM 45 Mauve



AM 64 Sand



AM 58 Sage



AM 60 Alabaster



AM 54 Dutch Blue



AM 61 Tea Rose



AM 56 Cinnabar



AM 46 Dusty Jade



AM 57 Bronze



AM 51 Crocus



AM 62 Raspberry



AM 55 Tomato



AM 47 Turquoise



AM 44 Dove



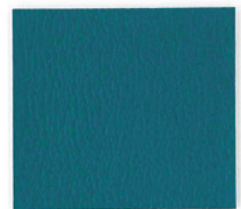
AM 49 Blue Ridge



AM 52 Sangria



AM 39 American Beauty



AM 48 Grotto



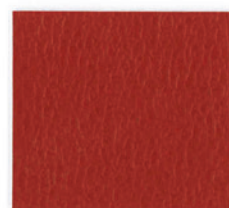
AM 63 Gunmetal



AM 35 Regimental Blue



AM 40 Plum



AM 65 Paprika



AM 34 Forest



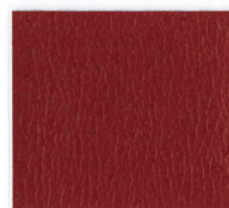
AM 42 Black



AM 50 Imperial Blue



AM 41 Burgundy



AM 38 Claret



AM 36 Yew Green

Grade 4 Vinyl

| | | | | | | | |
|---|---|---|---|--|---|---|---|
|  |  |  |  |  |  |  |  |
| Adobe White US 394 | Ivory US 500 | Coral Sand US 502 | Froth US 501 | Surf US 513 | Fjord Blue US 517 | Bristol Blue US 515 | Pink US 503 |
|  |  |  |  |  |  |  |  |
| Alabaster US 396 | Parchment US 385 | Shell US 402 | Sand US 384 | Dusty Jade US 417 | Turquoise US 419 | Dutch Blue US 518 | Mauve US 415 |
|  |  |  |  |  |  |  |  |
| Taupe US 410 | Bone US 404 | Peach US 406 | Vicuna US 401 | Northwoods US 528 | Grotto US 426 | Wedgewood US 414 | Tea Rose US 416 |
|  |  |  |  |  |  |  |  |
| Putty US 403 | Bisque US 409 | Rose US 412 | Doe US 519 | Lilac US 508 | Sage US 526 | Space Blue US 353 | Rouge Red US 505 |
|  |  |  |  |  |  |  |  |
| Gray Moss US 525 | Dewberry US 424 | Sunset US 521 | Camel US 387 | Crocus US 433 | Artichoke US 527 | Royal US 354 | Raspberry US 362 |
|  |  |  |  |  |  |  |  |
| Dove US 413 | Woodrose US 423 | Paprika US 370 | Oak US 421 | Deep Violet US 511 | Olive Green US 529 | Regimental Blue US 345 | Dark Cherry US 507 |
|  |  |  |  |  |  |  |  |
| Greystone US 425 | Chestnut US 375 | British Tan US 365 | Terra Cotta US 376 | Grape US 509 | Alpine US 530 | Imperial Blue US 432 | American Beauty US 360 |
|  |  |  |  |  |  |  |  |
| Gunmetal US 392 | Bronze US 523 | Gingersnap US 369 | Cinnamon US 377 | Sangria US 506 | Forest US 344 | Sky Blue US 516 | Tomato US 358 |
|  |  |  |  |  |  |  |  |
| Blue Ridge US 427 | Mocha US 381 | Cinnabar US 520 | Goldenrod US 324 | Plum US 361 | Yew Green US 350 | Capri Blue US 514 | Rosalee US 504 |
|  |  |  |  |  |  |  |  |
| Graphite US 429 | Rustic Brown US 522 | Claret US 357 | Golden Corn US 524 | Dark Purple US 512 | Emerald US 343 | China Green US 434 | Mandarin Orange US 372 |
|  |  |  |  |  | | | |
| Black US 393 | Espresso US 383 | Burgundy US 364 | Sun Yellow US 322 | Concord US 510 | | | |

Sunbrella® Sofa Cushion Canvas

Aruba & Belmar series



Regatta
5493-0000



Mineral Blue
5420-0000



Sky Blue
5424-0000



Sapphire Blue
5452-0000



Air Blue
5410-0000



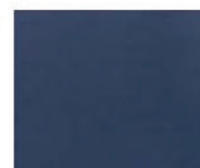
Pacific Blue
5401-0000



Capri
5426-0000



True Blue
5499-0000



Navy
5439-0000



Glacier
5428-0000



Aruba
5416-0000



Teal
5456-0000



Spa
5413-0000



Forest Green
5446-0000



Palm
5421-0000



Fern
5487-0000



Ginkgo
54011-0000



Macaw
5429-0000



Parrot
5405-0000



Brass
5484-0000



Wheat
5414-0000



Buttercup
5438-0000



Sunflower
5457-0000

Sunbrella® Sofa Cushion Canvas

Aruba & Belmar series



Tangerine
5406-0000



Tuscan
5417-0000



Rust
54010-0000



Melon
5415-0000



Hot Pink
5462-0000



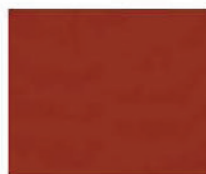
Blush
57000-0000



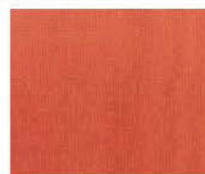
Logo Red
5477-0000



Jockey Red
5403-0000



Terracotta
5440-0000



Brick
5409-0000



Henna
5407-0000



Burgundy
5436-0000



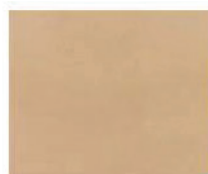
Iris
57002-0000



Dusk
5491-0000



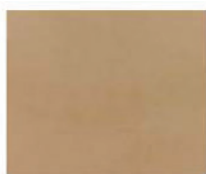
Heather Beige
5476-0000



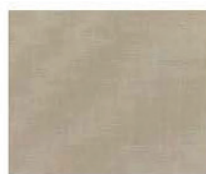
Camel
5468-0000



Chestnut
57001-0000



Cocoa
5425-0000



Taupe
5461-0000



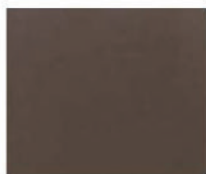
Cork
5448-0000



Raven Black
5471-0000



Black
5408-0000



Walnut
5470-0000



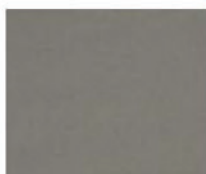
Bay Brown
5432-0000



Teak
5488-0000



Coal
5489-0000



Charcoal
54048-0000



Granite
5402-0000



Antique Beige
5422-0000



Vellum
5498-0000



Flax
5492-0000



Birds Eye
5472-0000



Canvas
5453-0000

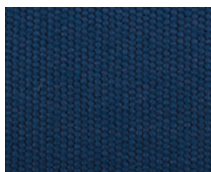


Natural
5404-0000



White
57003-0000

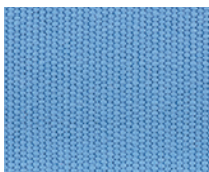
9 oz Umbrella Canvas



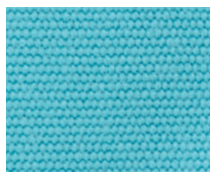
NBA: Navy Blue



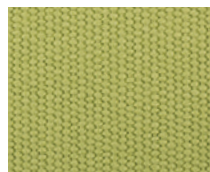
PBA: Pacific Blue



CPA: Capri



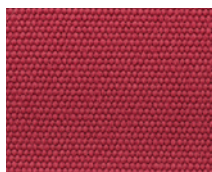
TQA: Turquoise



PTA: Pistachio



FGA: Forest Green



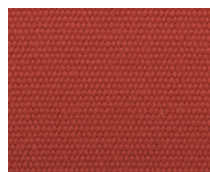
BGA: Burgundy



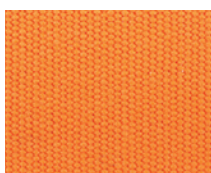
LRA: Logo Red



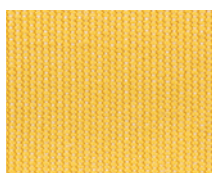
CRA: Coral



TRA: Terracotta



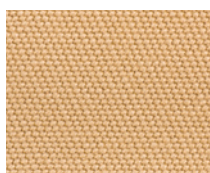
ORA: Orange



YLA: Sunflower



BNA: Brown



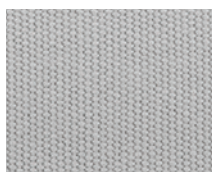
TTA: Toast



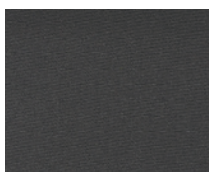
LNA: Linen



WHA: White



CGA: Cadet Gray



CHGA: Charcoal



BKA: Black

STRIPES REPEATING PATTERN: 6.4"



RSA: Red Stripe



OSA: Orange Stripe



YSA: Yellow Stripe



BSA: Blue Stripe



TQSA: Turquoise Stripe



BKSA: Black Stripe

Umbrella base guide by application

Umbrella Base Guide

| Umbrella Bases | Umbrella sizes | | | | | | | | | | | |
|----------------|--------------------------------|--------|------|----|-----|--------------------|-----|---------|------------|------|-----------|------|
| | Market umbrellas - 1 1/2" Pole | | | | | G-series - 2" pole | | | Cantilever | | Bolt-down | |
| | 6.5' | 7.5SQ' | 7.5' | 9' | 11' | 13' | 10' | 8.5x11' | 13SQ' | 16R' | 10SQ' | 13R' |
| UB50RD | T | T | T | T | T | | | | | | | |
| UB70RD | T | T | T | T | T | | | | | | | |
| UB75SQ | S | | S | S | | | | | | | | |
| UB100RSM | TS | T | TS | TS | TS | | | | | | | |
| UB150RSM | S | S | S | S | S | S | S | S | | | | |
| UBG24RSM | T | T | T | T | T | | | | | | | |
| UBG30RSM | S | S | S | S | S | | | | | | | |
| UBG36RSM | S | S | S | S | S | S | S | S | | | | |
| UBG40RSM | S | S | S | S | S | S | S | S | | | | |
| UBG40R555 | | | | | | | | | S | S | | |
| UB480 | | | | | | S | S | S | | | | |
| UB550 | | | | | | | | | S | S | S | S |
| UB12DP | | | | | | | | | S | S | | |
| UB20DP | | | | | | | | | | | S | S |
| UBBD | S | S | S | S | S | | | | | | | |
| UBINGF | | | | | | | | | S | S | S | S |

T = Table use

S = Stand-alone

TS = Table use or Stand-alone

T Table use: Indicates the base is suitable for use beneath a table. It is not recommended as a stand-alone base option.

S Stand-alone: Indicates the base is recommended as a stand-alone base option. It is not recommended as a table use base option.

TS Table use or Stand-alone: Indicates the base is suitable for use beneath a table or as a stand-alone base option.

Table use bases require an 8" stem option and stand-alone bases require an 18" stem option.

Indoor base sizing guide

| Table Base | Table Size | | | | | | | | | | | |
|---|--------------|--------------|--------------|--------------|--------------|---------------|---------------|---------------|--------|------------------|------------------|------------------|
| | 24" Round | 30" Round | 36" Round | 42" Round | 48" Round | 24" Square | 30" Square | 36" Square | 24x30" | 24x42" 30x42" | 24x48" 30x48" | 30x60" 30x72" |
| See outdoor table base guide for more base options | | | | | | | | | | | | |
| Adele 18" Round | • | • | | | | • | • | | • | | 2 | 2 |
| Adele 24" Round | | | • | • | • | | | • | | | | |
| Jaxon, Luna, Uptown End base set | | | | | | | | | | • | • | • |
| Jaxon, Luna 20x20 Cross bases | • | • | | | | • | • | | • | | | |
| Jaxon, Luna 24x24 Cross bases | | | • | | | | | • | | | | |
| Niles 20" Round Bases | • | • | • | | | • | • | | • | | 2 | 2 |
| Stamped Steel End bases | | | | | | | | | | 2 | 2 | 2BP |
| Stamped Steel 22x22 Cross bases | • | • | | | | • | • | | • | | | |
| Stamped Steel 24x30 Cross bases | | | | | | | | | | • | | |
| Stamped Steel 30x30 Cross bases | | | • | • | | | | • | | | | |
| Stamped Steel 36x36 Cross bases | | | | • | • | | | | | | | |
| Stamped Steel 18" Round bases | • | • | | | | • | • | | • | | 2 | 2BP |
| Stamped Steel 22" Round bases | | | • | | | | • | • | | | | 2BP |
| Stamped Steel 30" Round bases | | | | • | • | | | | | | | |
| TB-BD Bolt-Down bases | • | • | • | | | • | • | | • | 2 | 2 | |
| TB-C22 22" Cantilever Bracket | | | | | | • | • | | • | | | |
| TB-C33 33" Cantilever Bracket Also requires TB-P125 if marked PL (Pin Leg) | | | | | | | | • | | • | PL | PL |
| NV corner leg sets NV4L | | | | | | • | • | • | • | • | • | • |
| TB-SQ corner leg sets 2" or 3" | | | | | | • | • | • | • | • | • | • |
| Uptown 18" Round or Square bases | • | • | | | | • | • | | • | | 2 | 2 |
| Uptown 20" Round or Square bases | | | • | | | | • | | | | | |
| Uptown 24" Round or Square bases | | | • | • | • | | | • | | | | |

2 = two bases required per top / 2BP = two Bolt-On plate bases required per top

Outdoor base sizing guide

| Table base & top name <small>Outdoor bases can also be used with indoor tops</small> | Table top size | | | | | | | | | | | Umbrella Compatible |
|---|----------------|-------------------|--------------|--------------|--------------|---------------|--------------------|--------------------|------------------|------------------|------------------|------------------------|
| | 24" Round | 30 & 32" Round | 36" Round | 42" Round | 48" Round | 24" Square | 30 & 32" Square | 34 & 36" Square | 24x30" 24x32" | 30x51" 32x48" | 30x60" 30x72" | |
| Alpha Bolt-Down Longport, Seaside, Tribeca | • | • | • | | | • | • | | • | 2 | | |
| Bali Longport, Seaside, Tribeca | • | • | • | | | • | • | • | • | | | |
| Bali End Base Set Longport, Seaside, Tribeca | | | | | | | | | | • | • | UB |
| Boca 24" Spread Tribeca* | • | • | | | | • | • | | • | | | |
| Boca 33" Spread Tribeca* | | • | • | • | • | | • | • | | | | UB |
| Boca Trestle Tribeca* | | | | | | | | | | • | | |
| Elite 18" Round Longport, Seaside, Tribeca | • | • | | | | • | • | | • | 2 | 2 | |
| Elite 18" Square Longport, Seaside, Tribeca | • | • | • | | | • | • | | • | 2 | 2 | |
| Elite 24" Round Longport, Seaside, Tribeca | | | • | • | • | | | • | | | | |
| Elite 24" Square Longport, Seaside, Tribeca | | | | • | • | | | • | | | | |
| Elite End Base Set Longport, Seaside, Tribeca | | | | | | | | | | • | • | UB |
| Elite Double Column 16x30" | | | | | | | | | | • | | |
| Hampton Longport, Seaside, Tribeca | • | • | • | | | • | • | • | • | | | |
| Margate 16" Round Longport, Seaside, Tribeca | • | | | | | • | | | | | | |
| Margate 16" Square Longport, Seaside, Tribeca | • | | | | | • | | | • | | | |
| Margate 18" Round or Square Longport, Seaside, Tribeca | • | • | | | | • | • | | • | | | UC |
| Margate 20" Round Longport, Seaside, Tribeca | | | • | | | | | | | | | UC |
| Margate 20" Square Longport, Seaside, Tribeca | | | • | | | | | • | | | | UC |
| Margate 24" Round or Square Longport, Seaside, Tribeca | | | | • | • | | | • | | | | UC |

*Tribeca tops on Boca bases require special drilling

UB = Umbrella Base required / UC = Column holds umbrella / 2 = two bases required per top

Terms & Conditions

Orders & Cancellations

All orders, order changes or cancellations must be placed in writing by fax or e-mailed to orders@bfm1.com. Special orders require a 50% deposit. Canceled orders that have been assembled are subject to a minimum 25% restocking charge plus any material and labor charges not covered by the minimum restock charge.

Customers are responsible for any and all costs expended by BFM for changes or cancellations including but not limited to special upholstery, production and labor costs. Custom upholstered/manufactured items such as but not limited to umbrellas, sofa cushions/pillows & seats cannot be canceled once production has started.

Terms and Conditions

Credit terms are established on an individual basis. Special orders require a 50% deposit. Product not picked up or shipped within 30 days needs to be paid for in full to continue to be held for an additional 30 days. Product held beyond 60 days will incur a 1.5% storage charge per month beginning on the 61st day.

Returns

Merchandise cannot be returned without a written return authorization. Approved returns are subject to a minimum 25% restocking charge. Freight out and return freight will be the customer's responsibility. Return will be approved upon inspection. If you wish to return your product, simply call 215-289-5411 or email us at

returns@bfm1.com for a return authorization number (RA). All returns must be in the original condition and packaging. All returns will be subject to a 25% restocking fee.

Please Note: Any product ordered that has been custom built or manufactured includes but is not limited to; umbrellas, sofa cushions/pillows, custom upholstered seats are not returnable.

Freight & Freight Claims

BFM will ship by our carrier unless instructed otherwise on purchase order. All shipments are FOB our Philadelphia warehouse. PO must specify Prepaid & Add, Third Party or Freight Collect. BFM reserves the right to ship items FOB factory as circumstances may dictate. When the freight leaves our facility it is signed for in good order by the freight carrier. At this point the freight is no longer ours. It is the responsibility of the consignee to inspect the goods upon arrival. In the event there is not time to open cartons and inspect all items, the bill of lading should be signed subject to inspection. If any damage is found, it is the responsibility of the consignee to report the damage to the freight carrier and BFM Seating within 24 hours of receiving shipment. BFM will not be held responsible for carrier delays in delivery or any other circumstances beyond BFM's control.

Product Care

Product should be inspected on a regular basis for loose screws, glides, cracked or broken welds, cracked laminate, or any other irregularities.

Synthetic Teak: Wash with mild soap and warm water. Metal: Use a damp cloth. For grease and other stains use a combination of mild soap and water and wash thoroughly.

Wood: Coat with hard paste wax every few months for the first year and then as needed thereafter. Liquid spills should be cleaned up immediately. A liquid wood cleaner/wax product should be used for general cleaning. Do not use any solvents, abrasive or other harsh cleaners.

Upholstery: Vinyls may be cleaned with mild soap and water or vinyl cleaner (do not use any ammonia or chlorine products). For fabric upholstery verify cleaning procedure with manufacturer of the fabric or check with us.

Laminated Table Tops: Use mild soap and water (do not use any ammonia or chlorine products).

Warranty

The furniture in this catalog carries the following 1 year limited warranty against defects in construction to the original end user purchaser. Warranty is void if product is not maintained, altered in any fashion, mistreated or misused.

Extent of warranty is to cover workmanship and material of frames and does not cover upholstery, umbrellas or other materials. Other materials are governed by manufacturer's warranty. Warranty does not cover normal wear & tear.

This limited warranty is in lieu of all other warranties express or implied and BFM Seating expressly disclaims any implied warranties of merchantability or fitness for particular purpose. In no instance shall BFM Seating's liability under warranty exceed the value of the warranted item or items. Warranty as expressed does not include replacement freights or installation/removal. All warranty claims are subject to the following:

- Synthetic Teak: Excessive heat from the following sources voids warranty, prism affect of sun on footed glassware, metal objects such as condiment stands and any other object that creates excessive heat.
- Consumer properly assembling KD items
- Product is subject to normal use. Indoor furniture may not be subject to outdoor use or extremes in temperature & humidity. Outdoor furniture may not be subject to winter weather elements or excessive weather elements of any type.
- Umbrellas should not be subject to excessive wind or used in unsafe conditions in open or closed position.
- Warranty Claims must include pictures of subject product & may also require return for inspection. If returned product is deemed as abused return freight will be the responsibility of returning party.
- BFM reserves the right to determine under warranty to replace applicable part(s) or complete item.
- For any reason if any product is to be returned, a return authorization must be obtained before returning. Any product returned without a return authorization will be refused and all shipping costs will be the responsibility of the shipping party.

We reserve the right to update or discontinue products without notice.

If the buyer is concerned about exact color, texture, or stain, we strongly encourage you to request a sample swatch by contacting us. Colors may vary from catalog or website images. We are not responsible for discrepancies in color, texture, or stain if a sample swatch is not requested.

